

asustor

Quick Installation Guide

Applicable Models

AS7110T

Ver.3.4.1126(2019-11-26)

Table of Contents

Notices.....	3
Safety Precautions.....	4
1. Package Contents	5
2. Optional Accessories	7
3. Hardware Installation Guide	8
Tools Needed for Hard Disk Installation	8
Hard Disk Installation.....	8
Connecting and Powering on the NAS	10
Upgrading System Memory	11
Installing M.2 SSD	15
4. Software Installation Guide.....	19
Download Center Installation.....	19
Web Installation	21
Installation Using a Mobile Device.....	22
Installation Using the LCD Display	24
Installation Using a Direct Connection	25
Shutting Down Your NAS	25
5. Appendix.....	26
LED Indicators	26
Rear Panel.....	27
Operating the LCD Panel.....	27
Troubleshooting.....	30

Notices



Federal Communications Commission Statement

This device complies with FCC Rules Part 15. Operation is subject to the following two conditions:

- ➔ This device may not cause harmful interference.
- ➔ This device must accept any interference received, including interference that may cause undesired operation.

This equipment has been tested and found to comply with the limits for a class B digital device, pursuant to Part 15 of the Federal Communications Commission (FCC) rules. These limits are designed to provide reasonable protection against harmful interference in a residential installation. This equipment generates, uses, and can radiate radio frequency energy and, if not installed and used in accordance with the instructions, may cause harmful interference to radio communications. However, there is no guarantee that interference will not occur in a particular installation. If this equipment does cause harmful interference to radio or television reception, which can be determined by turning the equipment off and on, the user is encouraged to try to correct the interference by one or more of the following measures:

- ➔ Reorient or relocate the receiving antenna.
- ➔ Increase the separation between the equipment and receiver.
- ➔ Connect the equipment into an outlet on a circuit different from that to which the receiver is connected.
- ➔ Consult the dealer or an experienced radio/TV technician for help.

Changes or modifications not expressly approved by the party responsible for compliance could void the user's authority to operate the equipment.

CE Mark Warning



CE marking for devices without wireless LAN/Bluetooth

The shipped version of this device complies with the requirements of the EEC directives 2004/108/EC "Electromagnetic compatibility" and IEC60950-1:2005 (2nd Edition)+A1:2009 "Information technology equipment-Safety".

Safety Precautions

The following safety precautions will increase the life of the NAS. Follow all precautions and instructions.

Electrical Safety

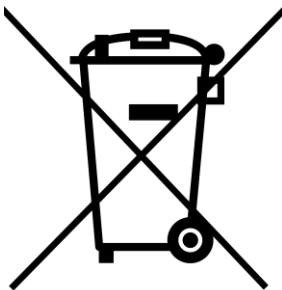
Unplug this product from the power source before cleaning.

Use only the bundled power adapter. Using other power adapters may damage your device.

Ensure that you plug the power adapter to the correct power input rating. Check the label on the power adapter for the power rating.

Operation Safety

- ➔ DO NOT place this product in a location where it may get wet.
- ➔ Place this product on a flat and stable surface.
- ➔ Use this product in environments with an ambient temperature between 0°C and 40°C.
- ➔ DO NOT block the air vents on the case of this product. Always provide proper ventilation for this product.
- ➔ DO NOT insert any object or spill liquid into the air vents. If you encounter technical problems with this product, contact a qualified service technician or your retailer. DO NOT attempt to repair this product yourself.










DO NOT throw this product in municipal waste.

This product has been designed to enable proper reuse of parts and recycling. This symbol of the crossed out wheeled bin indicates that the product (electrical and electronic equipment) should not be placed in municipal waste. Check local regulations for disposal of electronic products.

1. Package Contents

Applicable Models: AS7110T

Model Name	 AS7110T
 Power Cord	x1
 RJ45 Network Cable	x3
 10 Gigabit Network Cable	x1
 M.2 thumbscrews	x2
 Screws for use with 3.5" HDD	x40
 Screws for use with 2.5" HDD	x40



Quick Installation Guide

x1

2. Optional Accessories

The items below may be purchased from the ASUSTOR Accessories Store <http://shop.asustor.com>.

3. Hardware Installation Guide

All data stored on the hard disk(s) will be erased and CANNOT be recovered. Please back up all important data before initializing the system.

Tools Needed for Hard Disk Installation

- Phillips head screwdriver
- At least one 2.5 or 3.5 inch SATA hard disk. (For a list of compatible hard disks, please see <http://www.asustor.com/service/hd?id=hd>)

Hard Disk Installation

1. Press the button on the lower portion of the hard disk tray to release the latch.



2. Using the latch, gently pull the disk tray out of the disk bay.



3. Mount the hard disk to the disk tray.

- ✓ **3.5-inch hard disks:** Place the hard disk into the disk tray, making sure that the mounting holes on the sides of the hard disk and disk tray are lined up. Secure the drive with four screws.



- ✓ **2.5-inch hard disks and SSD hard disks:** Place the hard disk into the area of the disk tray outlined in red (see picture below). Make sure that the mounting holes on the bottom of the hard disk and disk tray are lined up. Secure the drive with four screws.



4. Slide the disk tray onto the rails of the disk bay. Using the latch, gently push the disk tray all the way into the disk bay. Secure the disk tray in place by pushing down on the latch. The latch should close easily and snap in with an audible 'click'. Please make sure that the disk tray is pushed all the way into the disk bay before attempting to secure the latch.



- Once the latch is secure, you can lock it in place using the disk tray lock. Using a flathead screwdriver, turn the lock counterclockwise to lock the latch mechanism. Turning the lock clockwise will unlock it.



Connecting and Powering on the NAS

- Connect the NAS to its power supply.
- Connect the NAS to your router, switch or hub using an Ethernet cable.



- Press and hold down the power button for 1 – 2 seconds until the blue power LED indicator is lit. This indicates that the NAS is now powered on. While the NAS is being powered on, the green system status LED indicator will flash and the blue network LED indicator will be lit as well.



4. The NAS is ready for operation once the green system status LED indicator has stopped flashing and remains steadily lit. At this time, you should also hear a 'beep' from the system buzzer. Hardware installation is now complete. Please move on to the software installation guide to configure your system settings.

Upgrading System Memory

Notes and Precautions

All AS71 Series NAS devices support up to 64GB of memory. Before adding or removing memory modules, please read the following precautions thoroughly.

- Your NAS and memory modules use high precision components and electronic connector technology. To avoid invalidation of the warranty during your product warranty period, we recommend that:
 - ✓ Memory for AS71 series devices may be purchased from local dealers or the online ASUSTOR Accessories Store (<http://shop.asustor.com>).
 - ✓ You should not install a memory module by yourself, if you are not familiar with upgrading memory on a computer.
 - ✓ You should not touch the connectors or open the memory module compartment cover.
- Addition or removal of memory modules by yourself may result in an accident or malfunction of your NAS caused by breakage of the slot and module or a connection mistake. In this case, a repair fee will be charged.
- Be careful not to injure your hands or fingers with sharp edges of the memory module, inner components, or circuit boards of your NAS.
- ASUSTOR does not guarantee that third party memory modules will work in your NAS.
- Be sure to turn off your NAS and peripherals and disconnect all attachments and connection cables before adding or removing memory modules.
- To prevent damage from electrostatic discharge to memory modules, follow the instructions below:
 - ✓ Do not work at a location that produces static electricity easily, such as on a carpet.
 - ✓ Before adding or removing memory modules, touch an external metal object other than your NAS to ground yourself and eliminate static electricity. Do not touch any metal parts inside the NAS.
- Do not insert a memory module into the slot facing in the wrong direction. It may cause damage to the module or slot, or cause the circuit board to catch fire.
- Use a screwdriver that matches the size of the screws.
- Do not remove or loosen screws that are not specified to be removed.

Parts and Tools Needed

- ✓ Phillips head screwdriver

Removing the Cover

1. Shutdown the NAS by selecting [Shut down] from the ADM User Menu.



2. Disconnect all cables and devices connected to the NAS including the power cord.



3. Use a screwdriver to loosen the three screws found on the rear of the NAS as shown in the illustration.



4. Grip the cover from both sides with two hands and then gently push it back to remove it from the chassis.



Installing Memory

1. Upon opening the NAS, RAM slots can be found on the motherboard on the left hand side of the NAS. Insert a DIMM into an empty slot at a 45° angle and align the notches of the RAM and the slot.



2. Gently push the DIMM down until both latches click into place. RAM should be flush with the motherboard.



Replacing the Cover

1. Replace the cover and tighten the three screws that were removed previously.



2. Reconnect all cables including the power cord and then start up the NAS.



Installing M.2 SSD

Parts and Tools Needed

- ✓ Phillips head screwdriver

Removing the Cover

1. Shutdown the NAS by selecting [Shut down] from the ADM User Menu.



2. Disconnect all cables and devices connected to the NAS including the power cord.



3. Use a screwdriver to loosen the three screws found on the rear of the NAS as shown in the illustration.



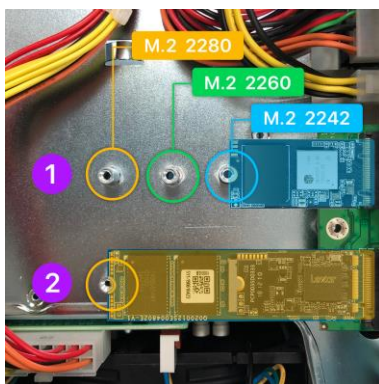
4. Grip the cover from both sides with two hands and then gently push it back to remove it from the chassis.



M.2 Installation Precautions

1. The AS7110T provide two M.2 SSD slots. For maximum compatibility, click [here](#) for a list of compatible M.2 SSDs.
2. If installing two drives, ASUSTOR recommends that they be the same model for optimum performance.
3. Do not mix PCIe NVMe and SATA AHCI SSDs in the M.2 slots as your NAS will not boot with both types of drives installed.

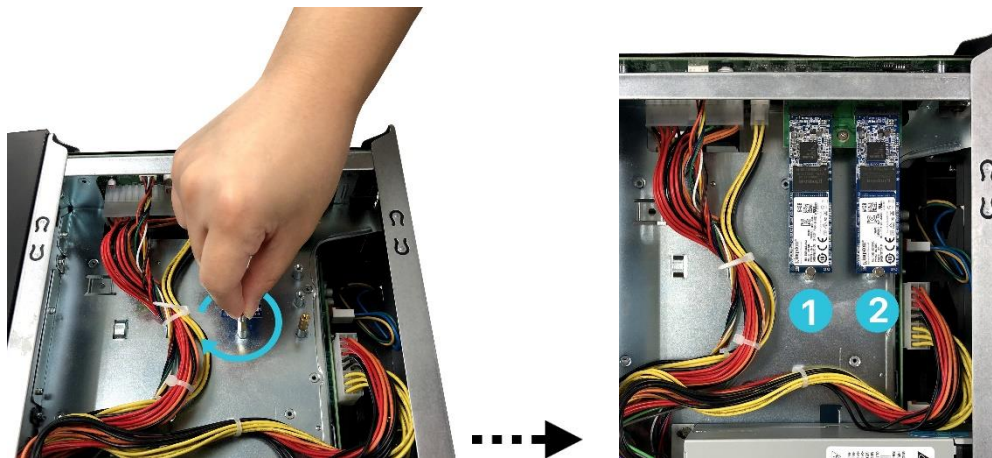
Installing M.2 Drives



1. Insert M.2 drive at a 45° angle and gently push into slot.



2. Adjust the standoff so that it matches the length of your SSD. Gently push the drive down as indicated by the arrow so that it is flush with the location of the standoff. Secure drive with included thumbscrew. Repeat process for second drive.



Replacing the Cover

1. Replace the cover and tighten the three screws that were removed previously.



2. Reconnect all cables including the power cord and then start up the NAS.



4. Software Installation Guide

There are 4 different installation methods that you can choose from. Please select the method most suitable for you. You can go to the download section of the ASUSTOR website (<http://www.asustor.com/service/downloads>) to download the latest software.

Download Center Installation

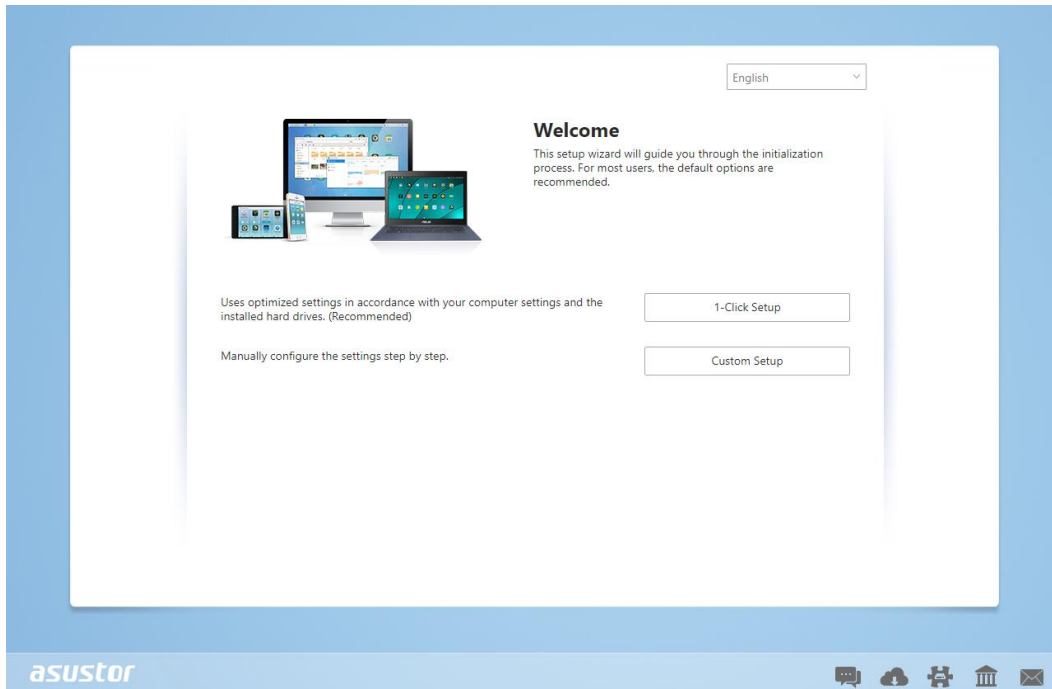
Windows Users

1. The installation wizard will install ASUSTOR Control Center onto your computer. After ASUSTOR Control Center has been installed, it will automatically begin to scan your network for ASUSTOR NAS devices.

The screenshot shows the ACC (ASUSTOR Control Center) application window. The interface includes the Asustor logo, a language dropdown set to English, and a navigation bar with icons for Scan, Open, Connect, ADM Update, Service, and Action. Below this is a table listing detected NAS devices with columns for Name, IP, Model, Serial Number, MAC Address, ADM Version, Status, and Enable.

Name	IP	Model	Serial Number	MAC Address	ADM Version	Status	Enable
AS6208T-80F7	172.16.2.35	AS6208T	AS16066210TM0007	10:bf:48:8b:80:f7	3.4.1.R7Q6	Ready	
AS3202T-LEO	172.16.9.116	AS3202T	AS16073204TM0003	10:bf:48:9b:86:99	3.4.3.B9R1	Ready	
AS6102T-87CE-MM	172.16.2.24	AS6102T	AS16076104TM0341	10:bf:48:8b:88:64	3.4.2.R932	Ready	
AS6204T-88DF	172.16.1.121	AS6204T	AS16076204TM0144	10:bf:48:8b:88:df	3.4.0.R7N3	Ready	
AS6204R	172.16.10.130	AS6204R	AS16076212RM0006	10:bf:48:8b:8b:bf	2.6.2.R6L2	Ready	
Surveillance	172.16.2.179	AS6204R	AS16076212RM0009	10:bf:48:8b:8b:b8	2.7.3.RHQ3	Ready	
AS-6212R-S	172.16.10.31	AS6212R	AS16076212RM0011	10:bf:48:8b:8b:9b	3.5.0.A9G1	Ready	
AS4004T-Jean	172.16.1.62	AS4004T	AS20180620TM0215	00:51:82:11:22:02	3.4.3.B9G1	Ready	
AS5110T-5129-S	172.16.2.77	AS5110T	AS25015110TM0000	20:14:12:10:51:2b	3.4.2.R932	Ready	
AS7008T-00r01-ri	172.16.2.10	AS7008T	AS87654321TM3333	20:14:08:27:00:01	3.5.0.A9G1	Ready	
AS6202T-AAA	172.16.2.105	AS6202T	ASUSTORRDTST	20:15:07:13:62:04	3.3.1.RIH2	Ready	
AS-604T-vivian	172.16.1.109	AS-604T	AT1207608MB0047	10:bf:48:89:c4:2e	3.5.0.A9R1	Ready	
AS-604T-C534	172.16.2.218	AS-604T	AT1207608MB00EA	10:bf:48:89:c5:33	3.4.3.B9K1	Ready	

2. Select your NAS from the list and follow the installation wizard's instructions to complete the configuration process.

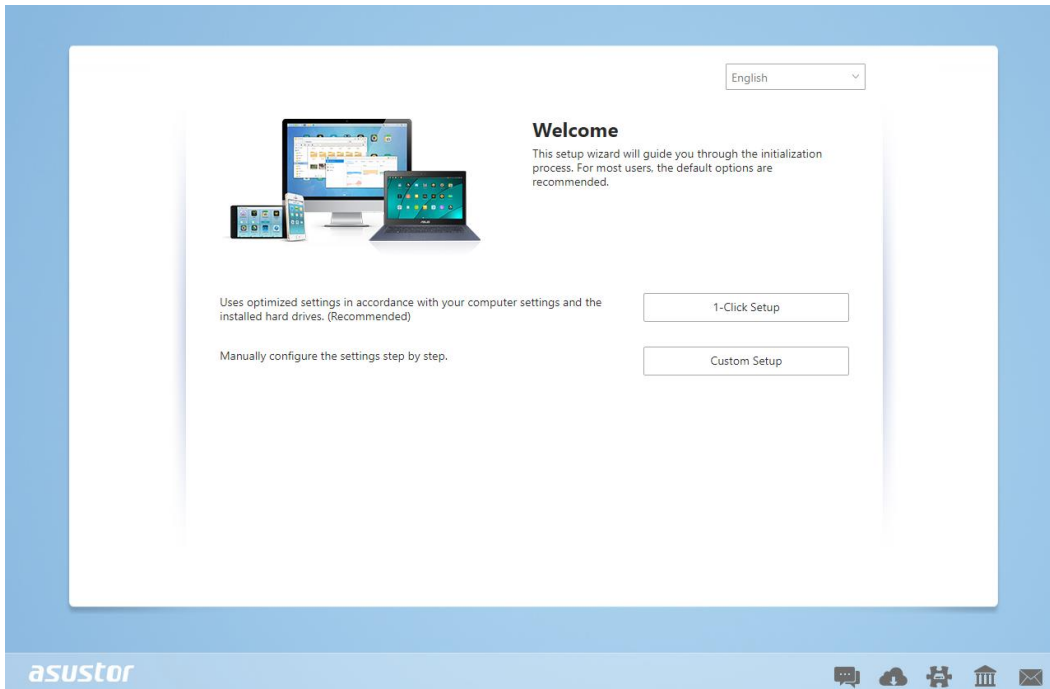


Mac Users

1. After ASUSTOR Control Center has been installed, it will automatically begin to scan your network for ASUSTOR NAS devices.

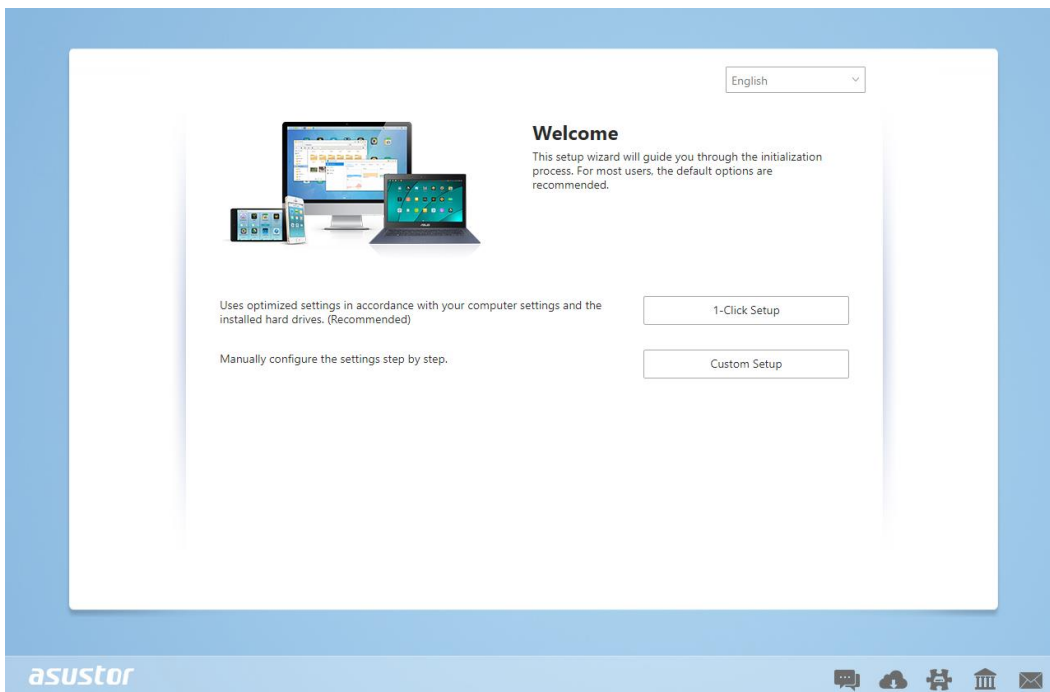
Name	IP Address	Model	Serial Number	MAC address	ADM Version	Status	WOL
AS1004T-1124-rr	172.16.1.53	AS1004T...	AL18041004EM00FB	20:18:11:15:11:24	3.4.2.R932	Ready	--
AS1002T-76BE	172.16.2.117	AS1002T...	AL18041004EM0119	10:BF:48:8C:76:BE	3.4.3.BA21	Ready	--
MARCO4004T	172.16.2.196	AS4004T	AL18054004TM00EC	10:BF:48:8C:7D:FB	3.4.1.R7Q6	Ready	--
AS4002T-RUDY	172.16.1.167	AS4002T	AL18064004TM0021	10:BF:48:8C:95:DA	3.4.2.R932	Ready	--
AS4002T-9B26	172.16.2.160	AS4002T	AL18064004TM0035	10:BF:48:8C:9B:26	3.4.3.BA21	Ready	--
AS6404T-1400TC	172.16.1.3	AS6404T	AL18076404TM0030	20:18:12:12:14:00	3.4.2.R932	Ready	--
AS1004T-LEO	172.16.2.156	AS1004T...	AL18081004EM03DF	20:19:02:19:16:1A	3.4.3.BA21	Ready	--
AS6302T-CDCF-ri	172.16.10.235	AS6302T	AL18116304TM012B	10:BF:48:8C:DC:8D	3.3.1.BHT1	Ready	--
AS6404T-DD51-AA	172.16.3.94	AS6404T	AL18116404TM005E	10:BF:48:8C:DD:51	3.4.2.R932	Ready	--
AS6404T-jlnnnnnnnnn...	172.16.1.142	AS6404T	AL18116404TM0064	10:BF:48:8C:DD:59	3.4.3.B9R1	Ready	--

2. Select your NAS from the list and follow the installation wizard's instructions to complete the configuration process.



Web Installation

1. If you already know your NAS's current IP address, you can open up a web browser and enter in your NAS's IP address (for example: <http://192.168.1.168:8000>) to begin initialization.
2. Please follow the instructions from the installation wizard to complete the configuration process.



Installation Using a Mobile Device

1. Search for “**AiMaster**” in Google Play or the Apple App Store. You can also scan the QR codes provided below. Download and install the AiMaster mobile app to your mobile device.

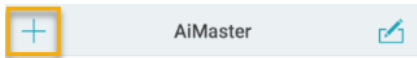
AiMaster for Android



AiMaster for iOS

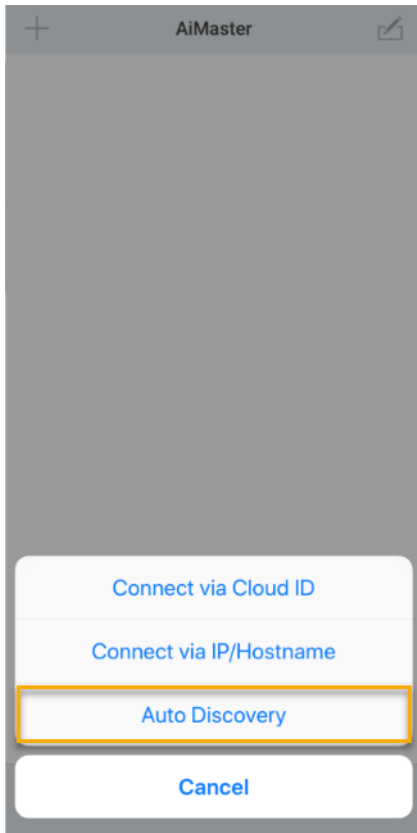


2. Make sure that your mobile device is connected to the same local network that your NAS is connected to.
3. Next, open AiMaster and then select the [+] icon from the toolbar at the top of the screen.

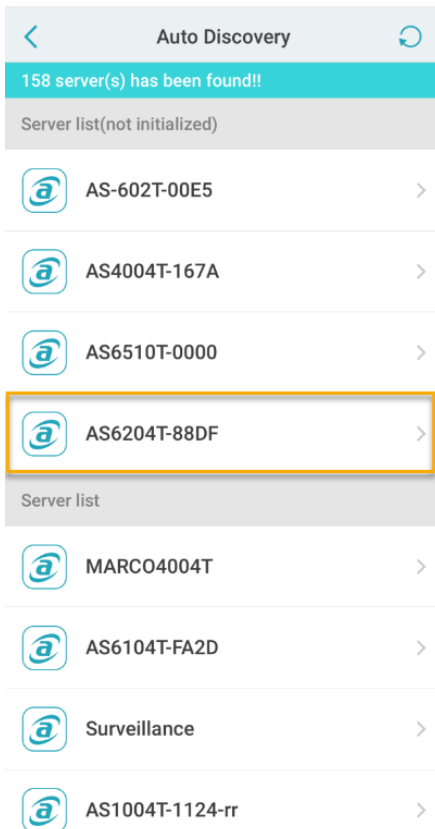


4. Select [**Auto Discovery**]. AiMaster will now scan the local network for your NAS.

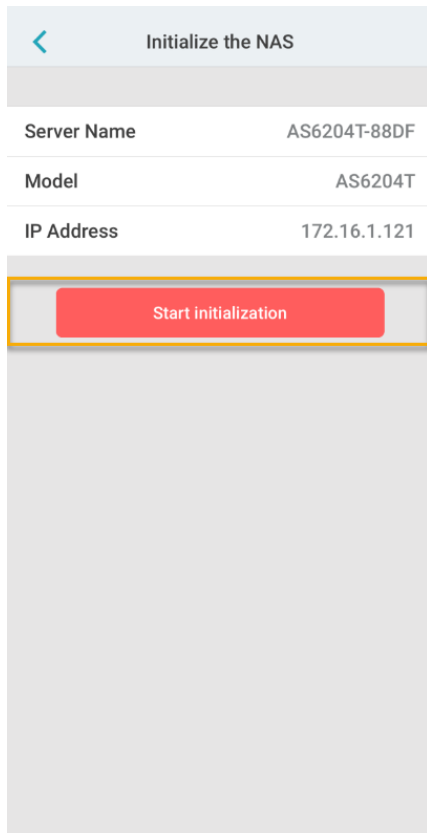




5. Select your NAS from the list that appears.



6. Select **[Start Initialization]** to begin installation. Follow the prompts and instructions to complete the configuration process.



Installation Using the LCD Display

- The LCD display will ask you whether or not you want initialize the NAS once it has detected that the NAS has not yet started to initialize.
- Please use the "↵" button found on the right side of the LCD display to confirm that you want to initialize the NAS. The system will now start the initialization process.



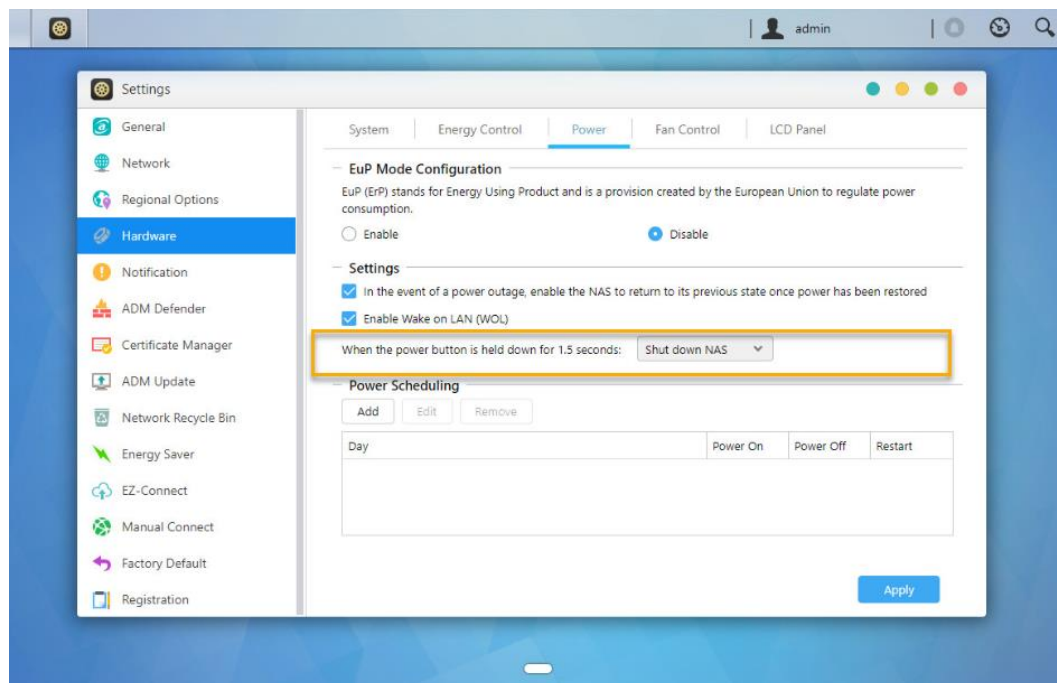
- Initialization is complete when the NAS's IP address is shown on the LCD display. NOTE: The password for the "admin" account will be set to "admin".
- This installation method is only suitable for use on models with LCD Displays

Installation Using a Direct Connection

Please see section [Troubleshooting](#) for installation instructions.

Shutting Down Your NAS

1. Confirm the function settings for the power button as shown in the graphic below. When the power button is held down for 1.5 seconds you can decide whether to shut down the NAS or have it enter into sleep mode. This setting may be access from within ADM by selecting: [Settings]→[Hardware] → [Power] → [Settings].

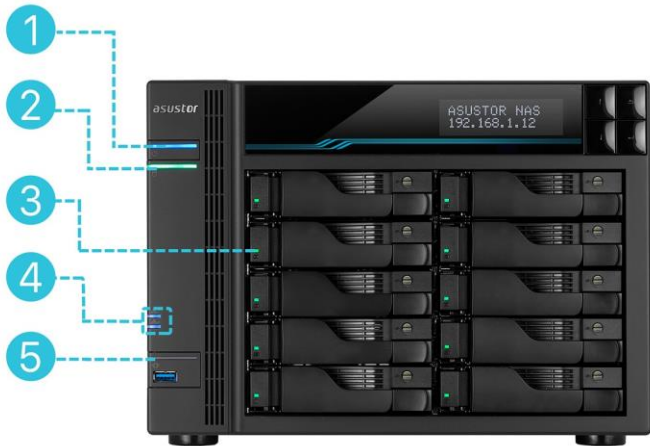


2. Hold down the power button for 1.5 seconds. You should be able to hear a “beep” from the system buzzer. Let go of the power button and the NAS will either shut down depending on your configuration.



5. Appendix

LED Indicators



AS7110T

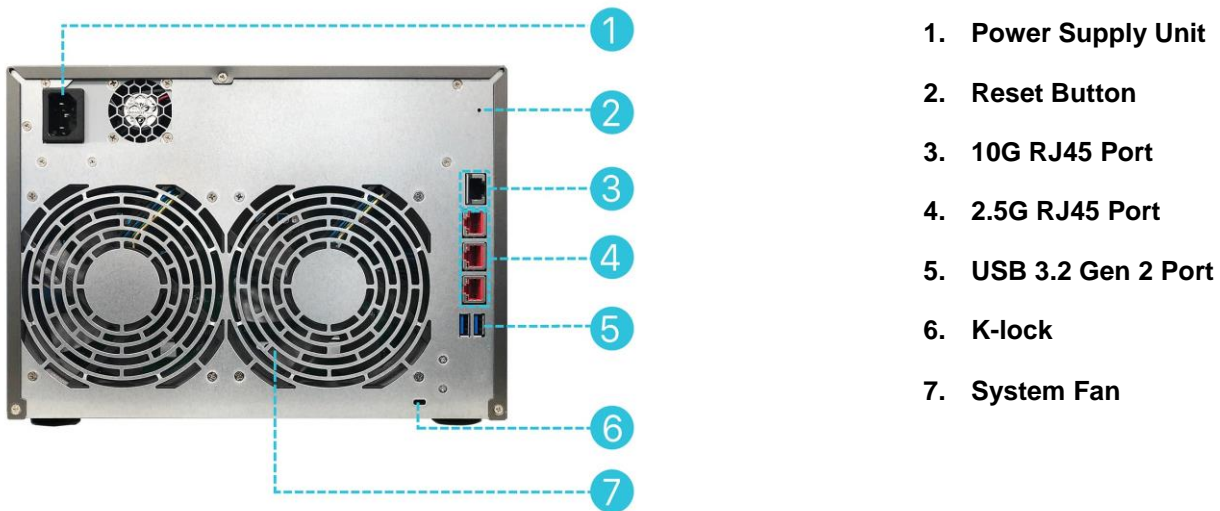
1. Power LED Indicator
2. System Status LED Indicator
3. Hard Disk LED Indicator
4. Network LED Indicator *
5. USB LED Indicator

* Additional notes: The AS7110T NAS devices have two LEDs indicating network connection on the front of the NAS. LAN LED 1 indicates that a 2.5-Gigabit LAN connection has been established, while LAN LED 2 is for 10-Gigabit connections.

LED Indicator	Color	Description	State
Power 	Blue	Steadily lit	Power on
		Flashing	Waking from sleep mode (S3)
	Orange	Steadily lit	Sleep mode (S3)
Flashes every 10 seconds		LED night mode	
System Status 	Green	Flashing	Powering on
		Steadily lit	System ready
Network 	Blue	Steadily lit	Network port connected
USB 	Green	Steadily lit	The USB device connected to the front of the NAS is ready for use
		Flashing	Data access in progress
Hard Disk 	Green	Steadily lit	Hard disk ready
		Flashing	Data access in progress

		Flashes every 10 seconds	Hibernation mode
	Red	Steadily lit	Hard disk abnormality

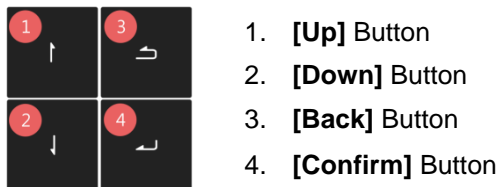
Rear Panel



1. Power Supply Unit
2. Reset Button
3. 10G RJ45 Port
4. 2.5G RJ45 Port
5. USB 3.2 Gen 2 Port
6. K-lock
7. System Fan

Operating the LCD Panel

You can use the LCD panel to configure system settings and check system information. The buttons located on the right side of the LCD panel can be used to navigate through its menus. Please see the graphic below for a description of each button.



1. **[Up]** Button
2. **[Down]** Button
3. **[Back]** Button
4. **[Confirm]** Button

After powering on the NAS, you will be able to see the NAS name and IP address on the LCD panel. The panel will turn off automatically after a few seconds. You can use the panel to configure settings and check system information.

```
AS6404T-117E
172.16.2.35
```

The main menu consists of the following submenus:

1. 1 Touch Backup
2. Network
3. Storage
4. Temperature
5. Operation
6. Configuration

Press the [Up] or [Down] buttons to navigate through the menu items. Press the [Confirm] button to enter into any submenu. Press the [Back] button to return to the previous level.

1. Touch Backup

In the 1 Touch Backup submenu, you can use the [Up], [Down] and [Confirm] buttons to select and execute the actions below.

```
MAIN
>1 TOUCH BACKUP
```

- 1.1. Progress: Execute the backup function for the USB port located on the front panel.
- 1.2. Eject Device: Eject any USB devices connected to the USB port located on the front panel.

2. Network

In the Network submenu you can use the [Up], [Down] and [Confirm] buttons to view the information listed below.

```
MAIN
>NETWORK
```

- 2.1. LAN
 - 2.1.1 IP Address
 - 2.1.2 Subnet Mask
- 2.2 WAN
 - 2.2.1 IP Address
 - 2.2.2 Subnet Mask

3. Storage

In the Storage submenu you can use the [Up], [Down] and [Confirm] buttons to view the volume information listed below.

```
MAIN
>STORAGE
```

- 3.1. Total Space: The total storage capacity of the volume.

3.2. Used Space: The amount of space currently in use on the volume.

3.3. Free Space: The amount of free space remaining on the volume.

4. Temperature

In the Temperature submenu you can use the [Up], [Down] and [Confirm] buttons to view the temperature for the items listed below.

```
MAIN
>TEMPERATURE
```

4.1. CPU: The temperature of the CPU.

4.2. System: The temperature of the NAS system.

4.3. HDD: The temperature of the hard disks.

5. Operation

In the operation submenu you can use the [Up], [Down] and [Confirm] buttons to execute the actions listed below.

```
MAIN
>OPERATION
```

5.1. Shutdown: Shutdown the NAS.

5.2. Restart: Restart the NAS.

6. Configuration

In the Configuration submenu you can use the [Up], [Down] and [Confirm] buttons to configure the items listed below.

```
MAIN
>CONFIGURATION
```

6.1. Server Name

Press the [Up] or [Down] buttons to cycle through letters and numbers. Press the [Confirm] button to confirm the character of your choice and to move on to the next character. Repeat this process until all of the characters in the name are configured. Pressing the [Back] button will bring up the “Confirm Change” option. You will be able to select between “Yes” and “No”.

```
SERVER NAME
ASUSTOR NAS
```

6.2. Network Setting

6.2.1. LAN

6.2.1.1. DHCP

Pressing the [Confirm] button will bring up the “Confirm Change” option. You will be able to select between “Yes” and “No”.

6.2.1.2. Static address

6.2.1.2.1. IP Address

Press the [Up] or [Down] buttons to cycle through numbers. Press the [Confirm] button to confirm the number of your choice and to move on to the next number. Repeat this process until all of the numbers are configured. Pressing the [Back] button will bring up the “Confirm Change” option. You will be able to select between “Yes” and “No”.

6.2.1.2.2. Subnet Mask

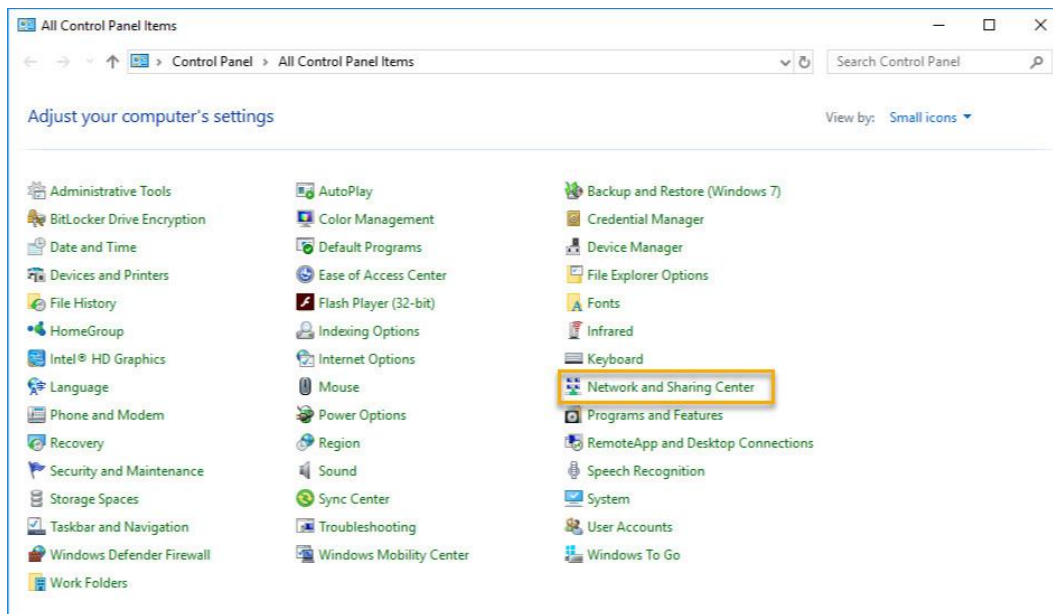
Press the [Up] or [Down] buttons to cycle through numbers. Press the [Confirm] button to confirm the number of your choice and to move on to the next number. Repeat this process until all of the numbers are configured. Pressing the [Back] button will bring up the “Confirm Change” option. You will be able to select between “Yes” and “No”.

Troubleshooting

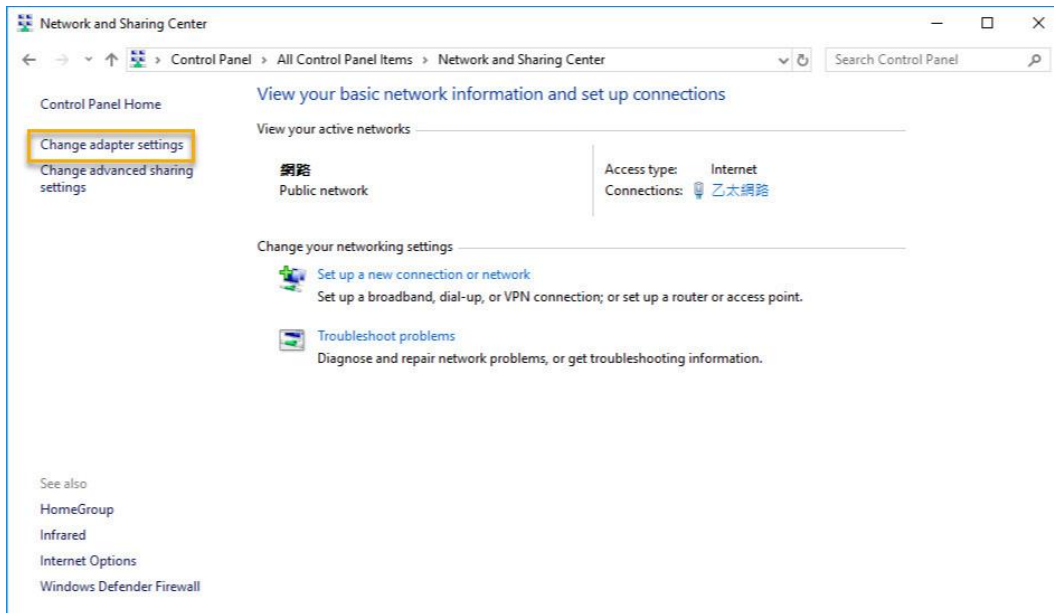
Q: Why can't I detect my ASUSTOR NAS using ASUSTOR Control Center?

A: If you are having trouble detecting your NAS using ASUSTOR Control Center, please do the following:

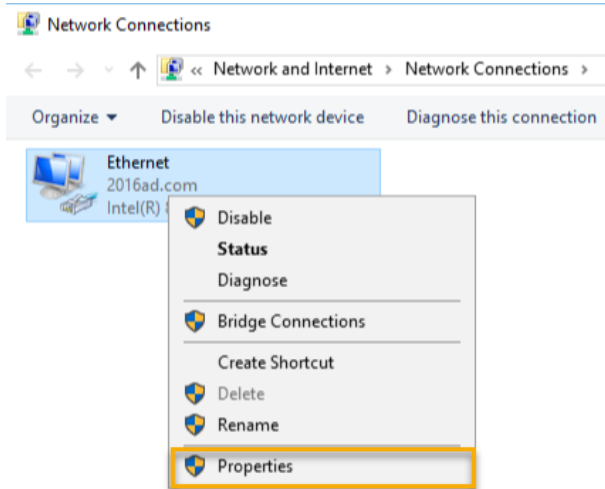
1. Please check your network connection:
 - ✓ Make sure that your computer and your NAS are part of the same local area network.
 - ✓ Check to see if the network LED indicator is lit. If you find that it is not lit, try connecting your Ethernet cable to the other network port or try using a different Ethernet cable.
 2. Please first disable any firewalls that may be running on your computer. Then try scanning for your NAS again using ASUSTOR Control Center.
 3. If you still cannot detect your NAS, please connect your NAS to your computer using the provided RJ-45 network cable and change your computer's IP settings.
- ✓ Select **[Start]** → **[Control Panel]** → **[Network and Sharing Center]**



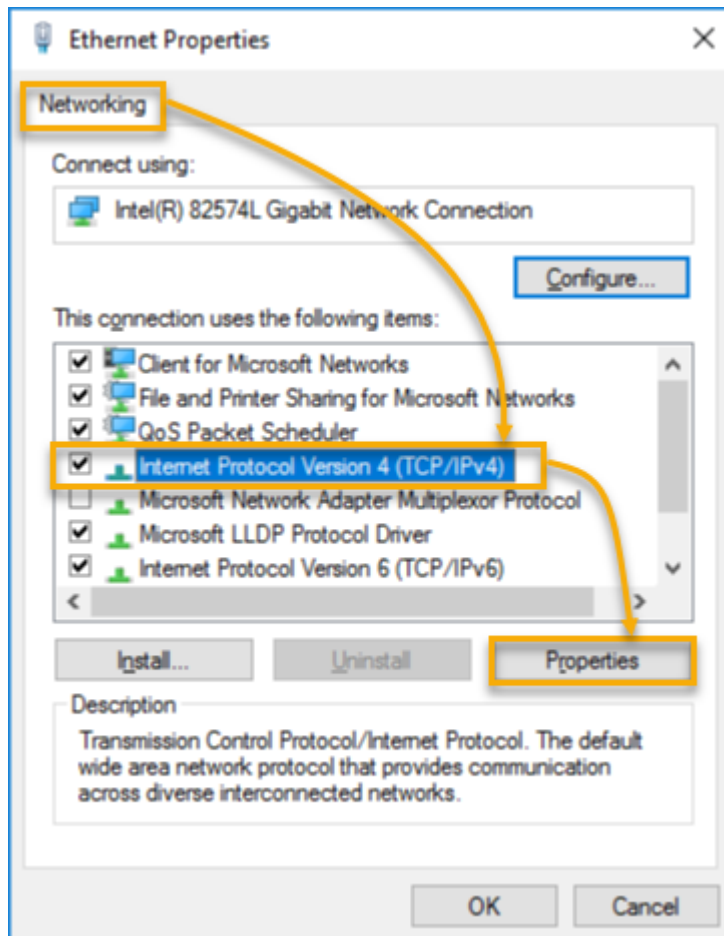
- ✓ Click on **[Change adapter settings]** in the left hand panel.



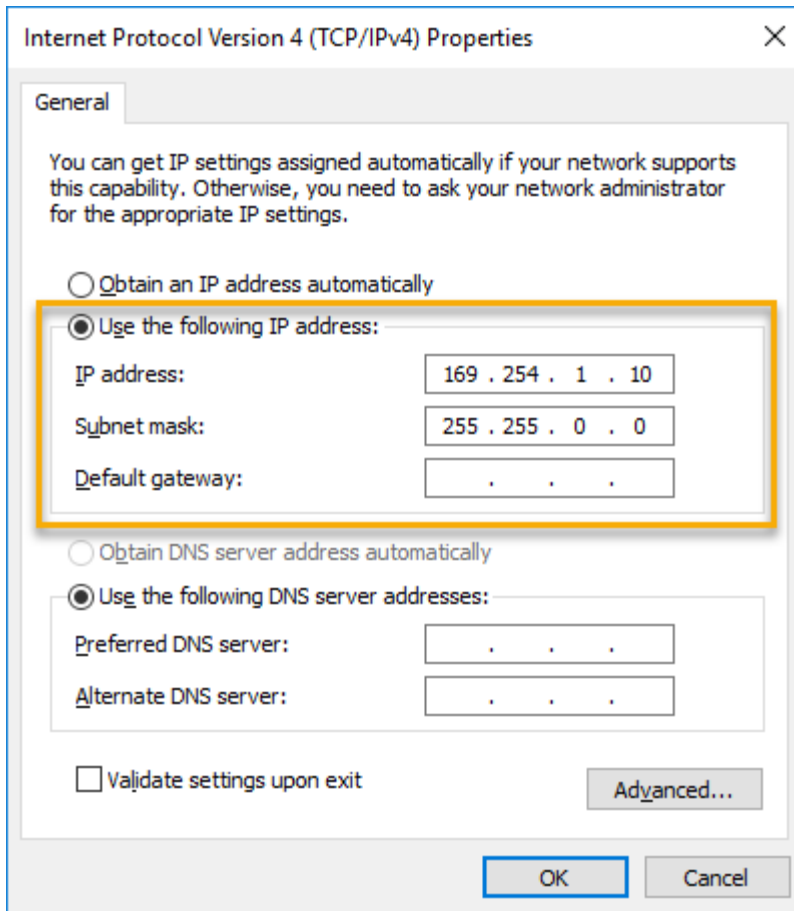
- ✓ Right-click on **[Local Area Connection]** and select **[Properties]**.



- ✓ Under the **[Networking]** tab select **[Internet Protocol Version 4 (TCP/IPv4)]** and click on **[Properties]**.



- ✓ Under the **[General]** tab select the **[Use the following IP address]** radio button. Set the **[IP address]** to **169.254.1.10** and the **[Subnet mask]** to **255.255.0.0** and then click on **[OK]**.



- ✓ Open up ASUSTOR Control Center to scan for your NAS.

Name	IP	Model	Serial Number	MAC Address	ADM Version	Status	Enable
AS6208T-80F7	172.16.2.35	AS6208T	AS16066210TM0007	10:bf:48:8b:80:f7	3.4.1.R7Q6	Ready	
AS3202T-LEO	172.16.9.116	AS3202T	AS16073204TM0003	10:bf:48:9b:86:99	3.4.3.B9R1	Ready	
AS6102T-87CE-MM	172.16.2.24	AS6102T	AS16076104TM0341	10:bf:48:8b:88:64	3.4.2.R932	Ready	
AS6204T-88DF	172.16.1.121	AS6204T	AS16076204TM0144	10:bf:48:8b:88:df	3.4.0.R7N3	Ready	
AS6204R	172.16.10.130	AS6204R	AS16076212RM0006	10:bf:48:8b:8b:bf	2.6.2.R6L2	Ready	
Surveillance	172.16.2.179	AS6204R	AS16076212RM0009	10:bf:48:8b:8b:b8	2.7.3.RHQ3	Ready	
AS-6212R-S	172.16.10.31	AS6212R	AS16076212RM0011	10:bf:48:8b:8b:9b	3.5.0.A9G1	Ready	
AS4004T-Jean	172.16.1.62	AS4004T	AS20180620TM0215	00:51:82:11:22:02	3.4.3.B9G1	Ready	
AS5110T-5129-S	172.16.2.77	AS5110T	AS25015110TM0000	20:14:12:10:51:2b	3.4.2.R932	Ready	
AS7008T-00r01-ri	172.16.2.10	AS7008T	AS87654321TM3333	20:14:08:27:00:01	3.5.0.A9G1	Ready	
AS6202T-AAA	172.16.2.105	AS6202T	ASUSTORRDTTEST	20:15:07:13:62:04	3.3.1.RIH2	Ready	
AS-604T-vivian	172.16.1.109	AS-604T	AT1207608MB0047	10:bf:48:89:c4:2e	3.5.0.A9R1	Ready	
AS-604T-C534	172.16.2.218	AS-604T	AT1207608MB00EA	10:bf:48:89:c5:33	3.4.3.B9K1	Ready	

4. If the above mentioned procedures have not managed to solve your problem, please contact your local ASUSTOR dealer or ASUSTOR Customer Service <http://support.asustor.com>. You are also encouraged to browse through the [ASUSTOR Knowledgebase](#).



SUPPORT.ASUSTOR.COM