



Quick Installation Guide

Applicable Models
AS6302T/AS6404T

Ver.3.0.0212(2020-2-12)

Table of Contents

Notices	3
Safety Precautions	4
1. Package Contents	5
2. Optional Accessories	7
3. Hardware Installation Guide	8
Tools Needed for Hard Disk Installation	8
Hard Disk Installation	8
Securing the Power Cord	10
Connecting and Powering on the NAS	11
Upgrading System Memory	12
4. Software Installation Guide	18
Download Center Installation	18
Web Installation	20
Installation Using a Mobile Device	21
Installation Using the LCD Display	23
Installation Using a Direct Connection	24
Shutting Down Your NAS	24
5. Appendix	26
LED Indicators	26
Rear Panel	27
Operating the LCD Panel	27
Troubleshooting	30

Notices



Federal Communications Commission Statement

This device complies with FCC Rules Part 15. Operation is subject to the following two conditions:

- ➔ This device may not cause harmful interference.
- ➔ This device must accept any interference received, including interference that may cause undesired operation.

This equipment has been tested and found to comply with the limits for a class A digital device, pursuant to Part 15 of the Federal Communications Commission (FCC) rules. These limits are designed to provide reasonable protection against harmful interference in a residential installation. This equipment generates, uses, and can radiate radio frequency energy and, if not installed and used in accordance with the instructions, may cause harmful interference to radio communications. However, there is no guarantee that interference will not occur in a particular installation. If this equipment does cause harmful interference to radio or television reception, which can be determined by turning the equipment off and on, the user is encouraged to try to correct the interference by one or more of the following measures:

- ➔ Reorient or relocate the receiving antenna.
- ➔ Increase the separation between the equipment and receiver.
- ➔ Connect the equipment into an outlet on a circuit different from that to which the receiver is connected.
- ➔ Consult the dealer or an experienced radio/TV technician for help.

Changes or modifications not expressly approved by the party responsible for compliance could void the user's authority to operate the equipment.

CE Mark Warning



CE marking for devices without wireless LAN/Bluetooth

The shipped version of this device complies with the requirements of the EEC directives 2004/108/EC "Electromagnetic compatibility" and IEC60950-1:2005 (2nd Edition)+A1:2009 "Information technology equipment-Safety".



The Adopted Trademarks HDMI, HDMI High-Definition Multimedia Interface, HDMI trade dress and the HDMI Logos are trademarks or registered trademarks of HDMI Licensing Administrator, Inc. in the United States and other countries.

Safety Precautions

The following safety precautions will increase the life of the NAS. Follow all precautions and instructions.

Electrical Safety

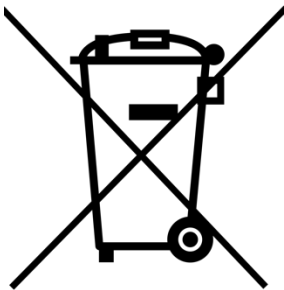
Unplug this product from the power source before cleaning.

Use only the bundled power adapter. Using other power adapters may damage your device.

Ensure that you plug the power adapter to the correct power input rating. Check the label on the power adapter for the power rating.

Operation Safety

- ➔ DO NOT place this product in a location where it may get wet.
- ➔ Place this product on a flat and stable surface.
- ➔ Use this product in environments with an ambient temperature between 0°C and 40°C.
- ➔ DO NOT block the air vents on the case of this product. Always provide proper ventilation for this product.
- ➔ DO NOT insert any object or spill liquid into the air vents. If you encounter technical problems with this product, contact a qualified service technician or your retailer. DO NOT attempt to repair this product yourself.











DO NOT throw this product in municipal waste.

This product has been designed to enable proper reuse of parts and recycling. This symbol of the crossed out wheeled bin indicates that the product (electrical and electronic equipment) should not be placed in municipal waste. Check local regulations for disposal of electronic products.



1. Package Contents

Applicable Models: AS6302T, AS6404T

Model Name	 AS6302T	 AS6404T
 Power Cord	x1	x1
 Adapter	x1	x1
 RJ45 Network Cable	x2	x2
 Power Cord Bracket	x1	x1
 Screws for use with 3.5" HDD	x8	x16
 Screws for use with 2.5" HDD	x8	x16



Quick Installation Guide

x1

x1

2. Optional Accessories

The items below may be purchased from the ASUSTOR Accessories Store <http://shop.asustor.com>.

3. Hardware Installation Guide

All data stored on the hard disk(s) will be erased and **CANNOT** be recovered. Please back up all important data before initializing the system.

Tools Needed for Hard Disk Installation

- Phillips head screwdriver
- At least one 2.5 or 3.5 inch SATA hard disk. (For a list of compatible hard disks, please see <http://www.asustor.com/service/hd?id=hd>)

Hard Disk Installation

1. Press the button on the lower portion of the hard disk tray to release the latch.



2. Using the latch, gently pull the disk tray out of the disk bay.

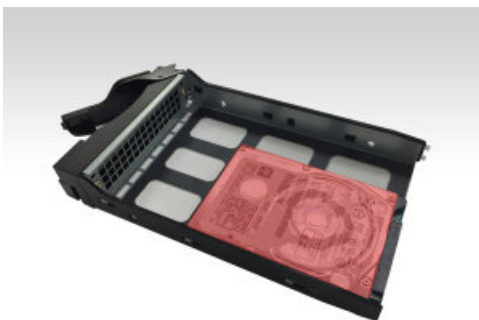


3. Mount the hard disk to the disk tray.

- ✓ **3.5-inch hard disks:** Place the hard disk into the disk tray, making sure that the mounting holes on the sides of the hard disk and disk tray are lined up. Secure the drive with four screws.



- ✓ **2.5-inch hard disks and SSD hard disks:** Place the hard disk into the area of the disk tray outlined in red (see picture below). Make sure that the mounting holes on the bottom of the hard disk and disk tray are lined up. Secure the drive with four screws.



4. Slide the disk tray onto the rails of the disk bay. Using the latch, gently push the disk tray all the way into the disk bay. Secure the disk tray in place by pushing down on the latch. The latch should close easily and snap in with an audible 'click'. Please make sure that the disk tray is pushed all the way into the disk bay before attempting to secure the latch.



- Once the latch is secure, you can lock it in place using the disk tray lock. Using a flathead screwdriver, turn the lock counterclockwise to lock the latch mechanism. Turning the lock clockwise will unlock it.



Note: Disk tray locks can be found on AS64 series devices.

Securing the Power Cord

Note: You can use the provided cord bracket to secure the power cord in place, if you are concerned about the NAS power cord becoming detached when the NAS is moved.

- Take the cord bracket out of the accessories box.



- Attach the bracket to the power cord as shown in the graphic below.



- Remove the fan screw by unscrewing it counter-clockwise.

AS6302T

AS6404T



4. Position the bracket over the hole for the removed fan screw. Secure the bracket in place by replacing the fan screw.

AS6302T



AS6404T



Connecting and Powering on the NAS

1. Connect the NAS to its power supply.
2. Connect the NAS to your router, switch or hub using an Ethernet cable.



3. Press and hold down the power button for 1 – 2 seconds until the blue power LED indicator is lit. This indicates that the NAS is now powered on. While the NAS is being powered on, the green system status LED indicator will flash and the blue network LED indicator will be lit as well.



4. The NAS is ready for operation once the green system status LED indicator has stopped flashing and remains steadily lit. At this time, you should also hear a 'beep' from the system buzzer. Hardware installation is now complete. Please move on to the software installation guide to configure your system settings.

Upgrading System Memory

Notes and Precautions

All AS63 and AS64 Series NAS devices support up to 8GB of memory. Before adding or removing memory modules, please read the following precautions thoroughly.

- Your NAS and memory modules use high precision components and electronic connector technology. To avoid invalidation of the warranty during your product warranty period, we recommend that:
 - ✓ Memory for AS63 and AS64 series devices may be purchased from local dealers or the online ASUSTOR Accessories Store (<http://shop.asustor.com>).
 - ✓ You should not install a memory module by yourself, if you are not familiar with upgrading memory on a computer.
 - ✓ You should not touch the connectors or open the memory module compartment cover.
- Addition or removal of memory modules by yourself may result in an accident or malfunction of your NAS caused by breakage of the slot and module or a connection mistake. In this case, a repair fee will be charged.
- Be careful not to injure your hands or fingers with sharp edges of the memory module, inner components, or circuit boards of your NAS.

- ASUSTOR does not guarantee that third party memory modules will work in your NAS.
- Be sure to turn off your NAS and peripherals and disconnect all attachments and connection cables before adding or removing memory modules.
- To prevent damage from electrostatic discharge to memory modules, follow the instructions below:
 - ✓ Do not work at a location that produces static electricity easily, such as on a carpet.
 - ✓ Before adding or removing memory modules, touch an external metal object other than your NAS to ground yourself and eliminate static electricity. Do not touch any metal parts inside the NAS.
- Do not insert a memory module into the slot facing in the wrong direction. It may cause damage to the module or slot, or cause the circuit board to catch fire.
- Use a screwdriver that matches the size of the screws.
- Do not remove or loosen screws that are not specified to be removed.

Parts and Tools Needed

- ✓ Phillips head screwdriver

Removing the Cover

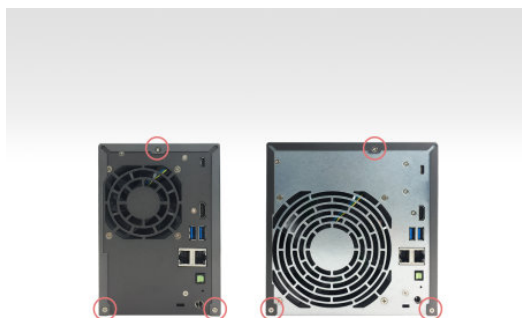
1. Shutdown the NAS by selecting [Shut down] from the ADM User Menu.



2. Disconnect all cables and devices connected to the NAS including the power cord.



3. Use a screwdriver to loosen the three screws found on the rear of the NAS as shown in the illustration.



4. Grip the cover from both sides with two hands and then gently push it back to remove it from the chassis.



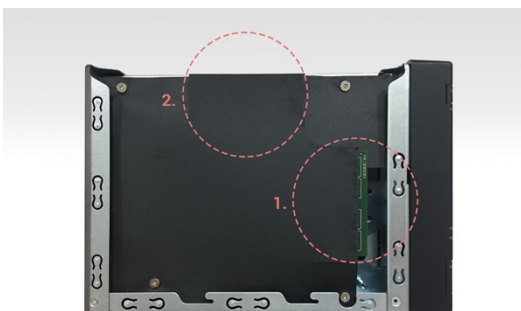
Installing Memory

When upgrading memory, please note that memory modules of the same size must be used. For example, AS63 devices come with two pre-installed 1GB memory modules. When upgrading, you must first remove the two 1GB memory modules before installing two 2GB or 4GB memory modules or a single module. The maximum supported memory is 8GB combined.

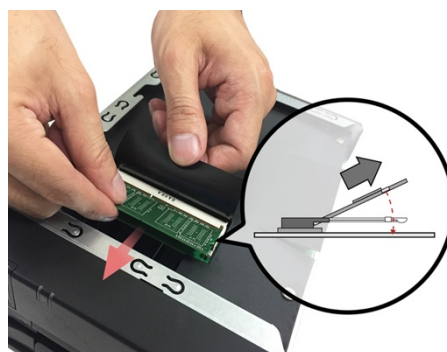
Note: If you decide to upgrade memory, it is recommended that you upgrade to two memory modules of the same size for optimal performance.

- ✓ When installing a single memory module, follow the steps outlined below.

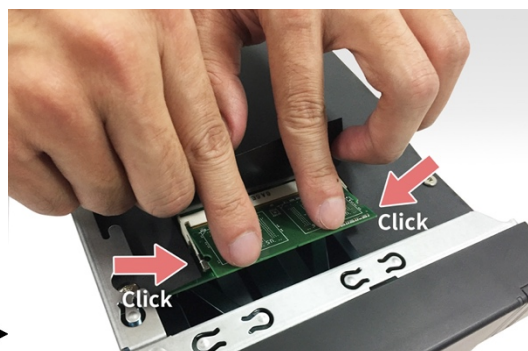
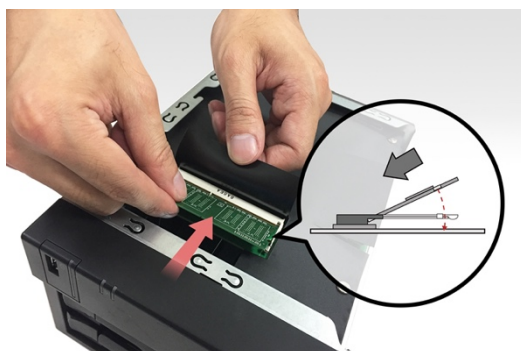
1. Locate the two pre-installed memory modules as indicated in the graphic below.



2. For both memory modules, pull back the black protective covering, and then release the ejector clips by gently pulling them out to the sides. Remove the memory modules.

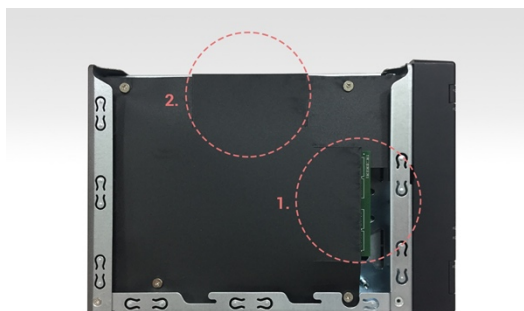


3. Diagonally slide the new memory module into slot No.1 (as shown in the graphic below) making sure that the memory module's connectors are fully inserted into the slot. Using two fingers, carefully push down and then back on the memory module until it clicks into place. You should be able to hear an audible "click".

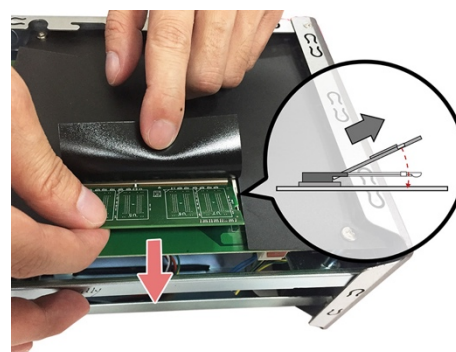
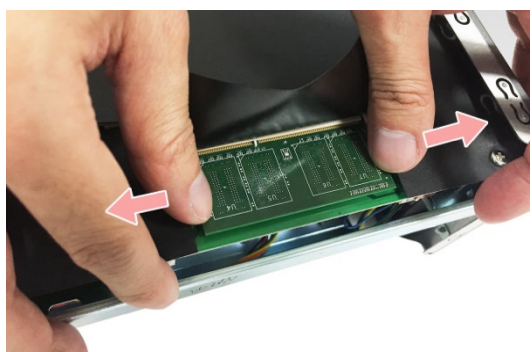
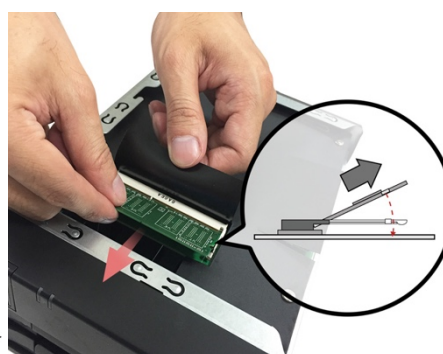


✓ When installing two memory modules, follow the steps outlined below.

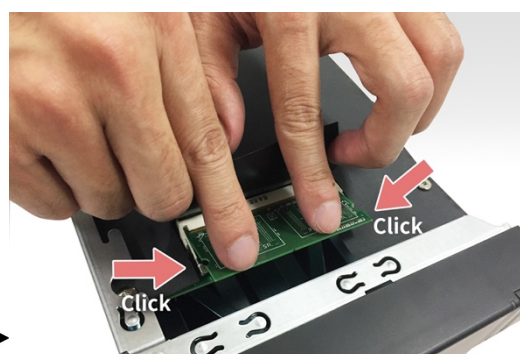
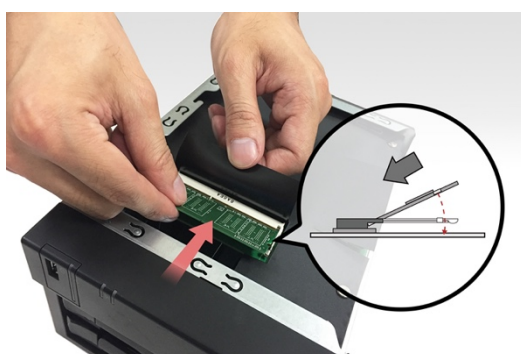
1. Locate the two pre-installed memory modules as indicated in the graphic below.

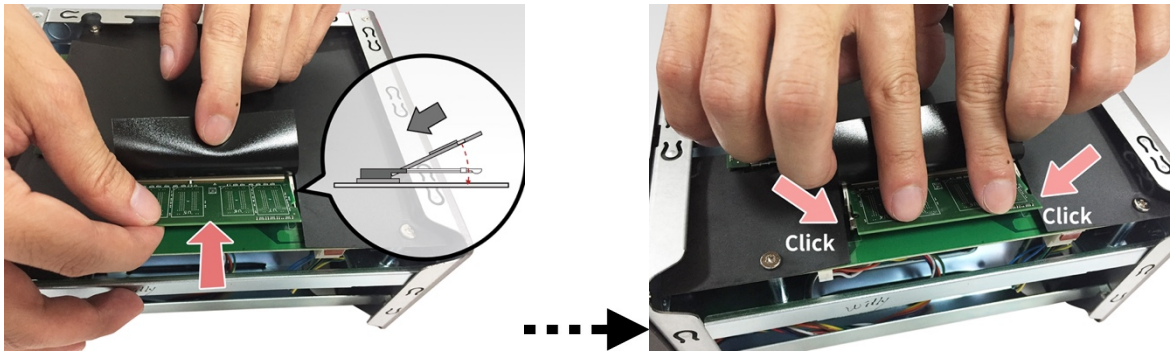


2. For both memory modules, pull back the black protective covering, and then release the ejector clips by gently pulling them out to the sides. Remove the memory modules.



3. For each slot, diagonally slide in a new memory module (as shown in the graphic below) making sure that each memory module's connectors are fully inserted into the slot. Using two fingers, carefully push down and then back on the memory module until it clicks into place. You should be able to hear an audible "click".





Replacing the Cover

1. Replace the cover and tighten the three screws that were removed previously.



2. Reconnect all cables including the power cord and then start up the NAS.



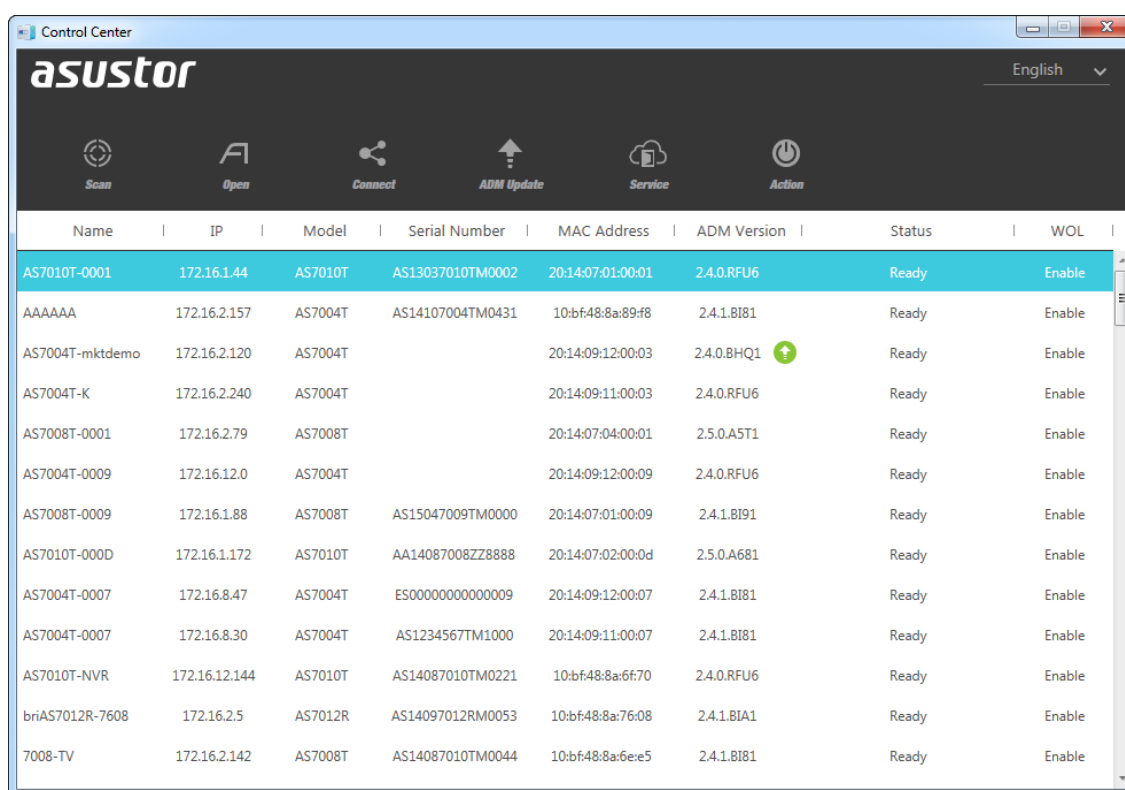
4. Software Installation Guide

There are 4 different installation methods that you can choose from. You can go to the download section of the ASUSTOR website (<http://www.asustor.com/service/downloads>) to download the latest software.

Download Center Installation

Windows Users

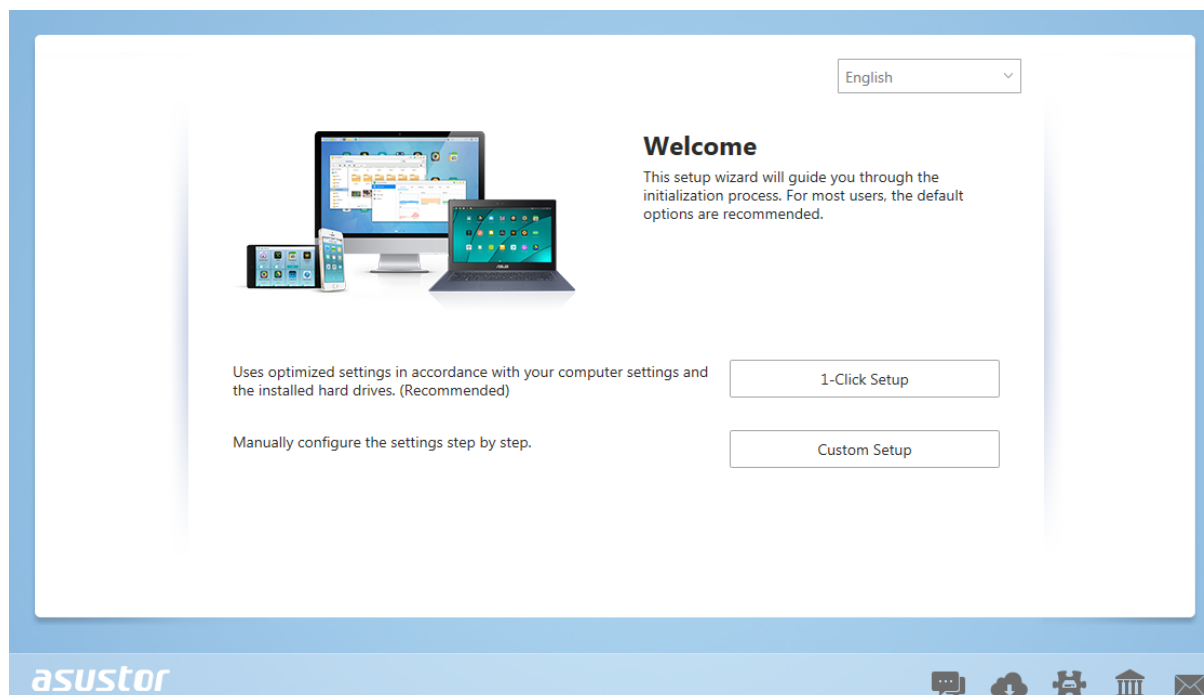
1. After ASUSTOR Control Center has been installed, it will automatically begin to scan your network for ASUSTOR NAS devices.



The screenshot shows the ASUSTOR Control Center application window. The title bar reads "Control Center". The interface has a dark header with the "asustor" logo and a language dropdown set to "English". Below the header is a navigation bar with icons for Scan, Open, Connect, ADM Update, Service, and Action. The main area displays a table of detected NAS devices.

Name	IP	Model	Serial Number	MAC Address	ADM Version	Status	WOL
AS7010T-0001	172.16.1.44	AS7010T	AS13037010TM0002	20:14:07:01:00:01	2.4.0.RFU6	Ready	Enable
AAAAAA	172.16.2.157	AS7004T	AS14107004TM0431	10:bf:48:8a:89:f8	2.4.1.BI81	Ready	Enable
AS7004T-mktdemo	172.16.2.120	AS7004T		20:14:09:12:00:03	2.4.0.BHQ1	Ready	Enable
AS7004T-K	172.16.2.240	AS7004T		20:14:09:11:00:03	2.4.0.RFU6	Ready	Enable
AS7008T-0001	172.16.2.79	AS7008T		20:14:07:04:00:01	2.5.0.A5T1	Ready	Enable
AS7004T-0009	172.16.12.0	AS7004T		20:14:09:12:00:09	2.4.0.RFU6	Ready	Enable
AS7008T-0009	172.16.1.88	AS7008T	AS15047009TM0000	20:14:07:01:00:09	2.4.1.BI91	Ready	Enable
AS7010T-000D	172.16.1.172	AS7010T	AA14087008ZZ8888	20:14:07:02:00:0d	2.5.0.A681	Ready	Enable
AS7004T-0007	172.16.8.47	AS7004T	ES00000000000009	20:14:09:12:00:07	2.4.1.BI81	Ready	Enable
AS7004T-0007	172.16.8.30	AS7004T	AS1234567TM1000	20:14:09:11:00:07	2.4.1.BI81	Ready	Enable
AS7010T-NVR	172.16.12.144	AS7010T	AS14087010TM0221	10:bf:48:8a:6f:70	2.4.0.RFU6	Ready	Enable
briAS7012R-7608	172.16.2.5	AS7012R	AS14097012RM0053	10:bf:48:8a:76:08	2.4.1.BIA1	Ready	Enable
7008-TV	172.16.2.142	AS7008T	AS14087010TM0044	10:bf:48:8a:6e:e5	2.4.1.BI81	Ready	Enable

2. Select your NAS from the list and follow the installation wizard's instructions to complete the configuration process.

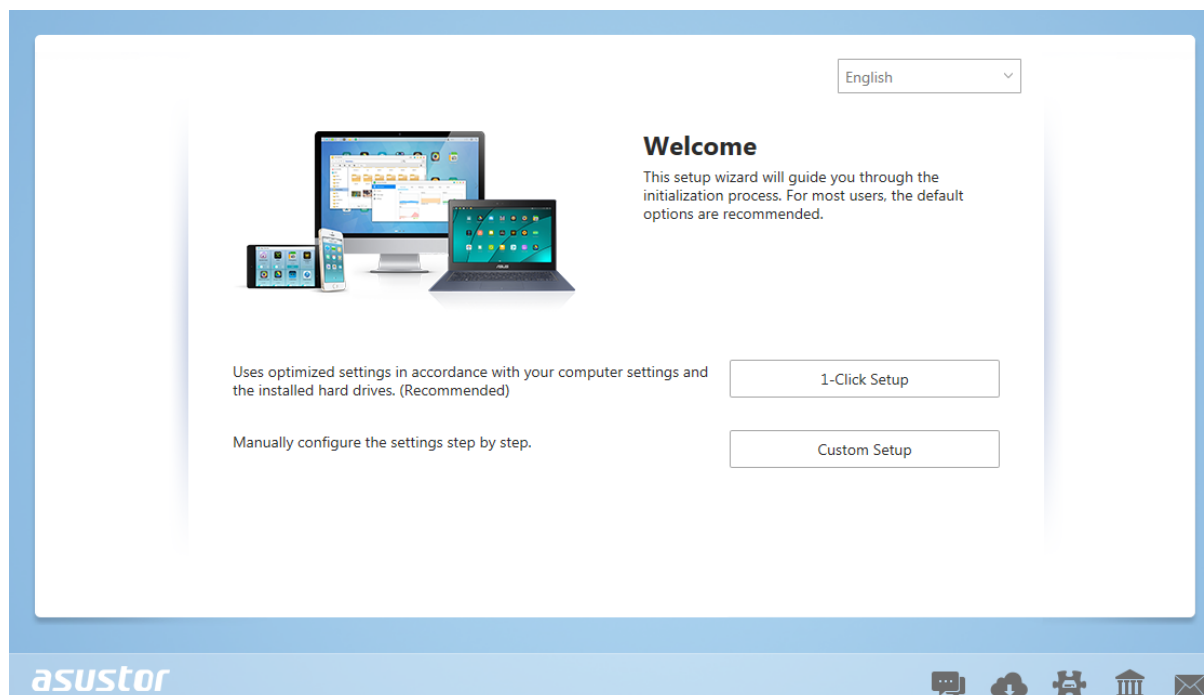


Mac Users

1. After ASUSTOR Control Center has been installed, it will automatically begin to scan your network for ASUSTOR NAS devices.

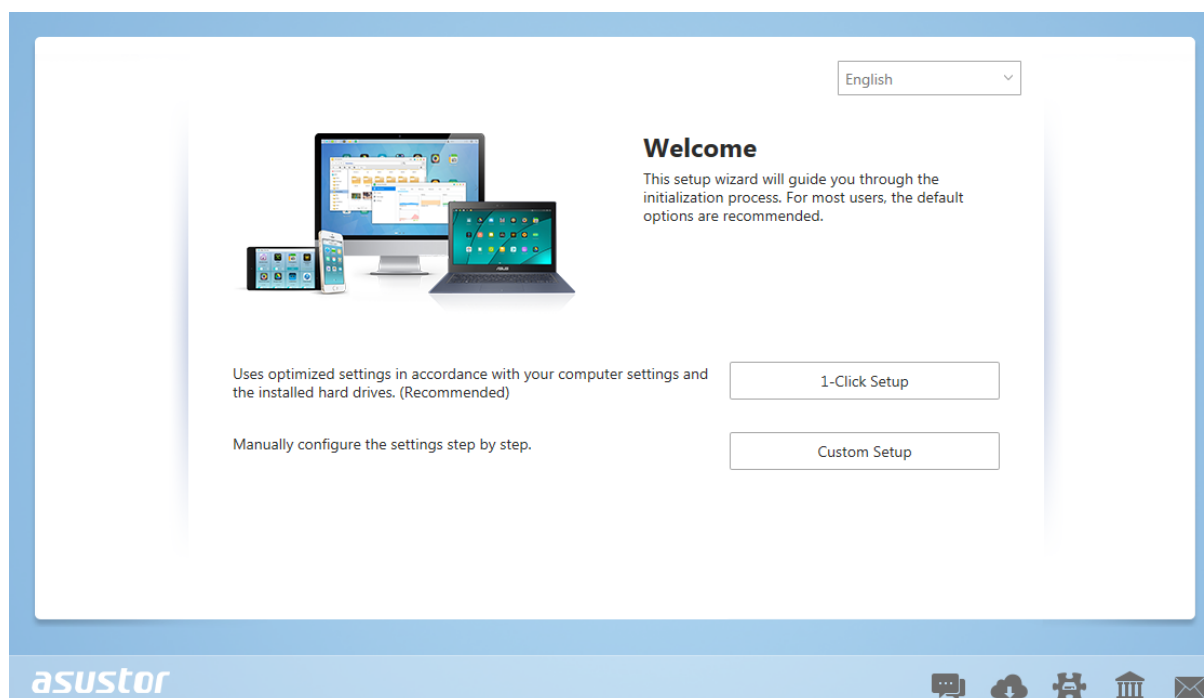
Control Center							
Name	IP Address	Model	Serial Number	MAC address	ADM Version	Status	WOL
GoblinNas	172.16.6.21	AS-604T	AT1403608MB0182	10:BF:48:8A:59:C0	3.0.0.B972	Ready	--
AS5110T-5129	172.16.2.92	AS5110T	AS25015110TM0000	20:14:12:10:51:29	3.0.0.B971	Ready	--
AS6102T-EC3D	172.16.1.84	AS6102T	AS15076104TM0019	10:BF:48:8A:EC:3D	3.0.0.B971	Ready	--
brAS7008T-7FC9	172.16.2.116	AS7008T	AS14107010TM0189	10:BF:48:8A:7F:C9	3.0.0.B971	Ready	--
AS-302T-6726	172.16.1.185	AS-302T	AT1301302MB0899	10:BF:48:8A:0D:E0	3.1.0.A951	Ready	--
Raymond-AS-604T-C...	172.16.1.147	AS-604T	AT1207608MB0103	10:BF:48:89:C5:1A	3.1.0.A8S1	Ready	--
AS-604T-C42D	172.16.1.109	AS-604T	AT1207608MB0047	10:BF:48:89:C4:2D	3.1.0.A8U2	Ready	--
NvrTest-AS6202T-1E99	172.16.2.221	AS6202T	AS15106204TM0143	10:BF:48:8B:1E:99	3.0.0.R8N2	Ready	--
AS3104T-8781	172.16.1.222	AS3202T	AS15093104TM0215	10:BF:48:8B:12:FA	3.0.0.R8N2	Ready	--
AS-602T-2DC5	172.16.2.159	AS-602T	AT1207602MB004A	10:BF:48:8A:2D:C5	3.0.0.B6L3	Ready	--

2. Select your NAS from the list and follow the installation wizard's instructions to complete the configuration process.



Web Installation

1. If you already know your NAS's current IP address, you can open up a web browser and enter in your NAS's IP address (for example: <http://192.168.1.168:8000>) to begin initialization.
2. Please follow the instructions from the installation wizard to complete the configuration process.



Installation Using a Mobile Device

1. Search for “**AiMaster**” in Google Play or the Apple App Store. You can also scan the QR codes provided below. Download and install the AiMaster mobile app to your mobile device.

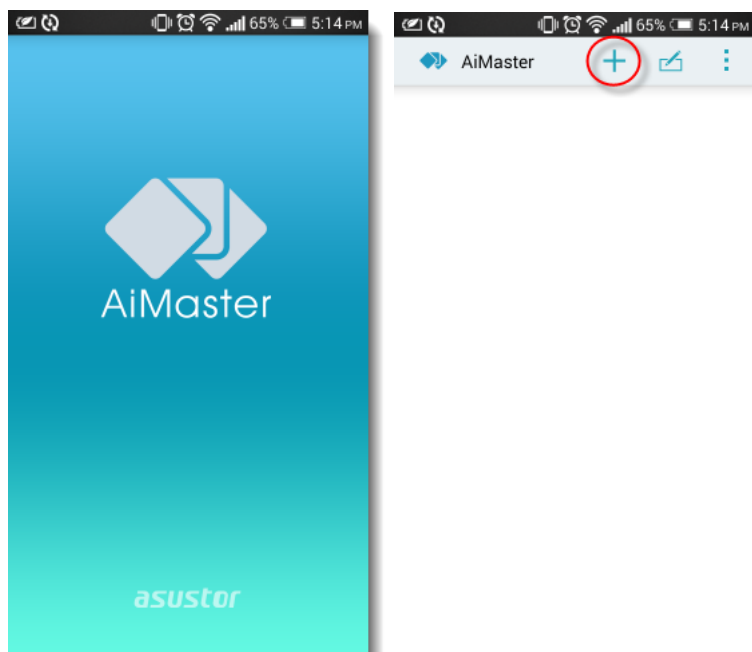
AiMaster for Android



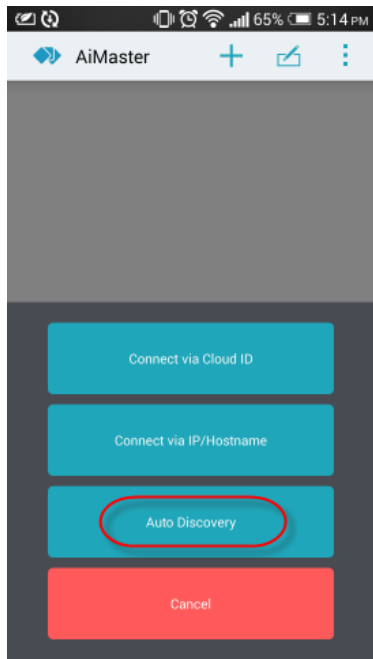
AiMaster for iOS



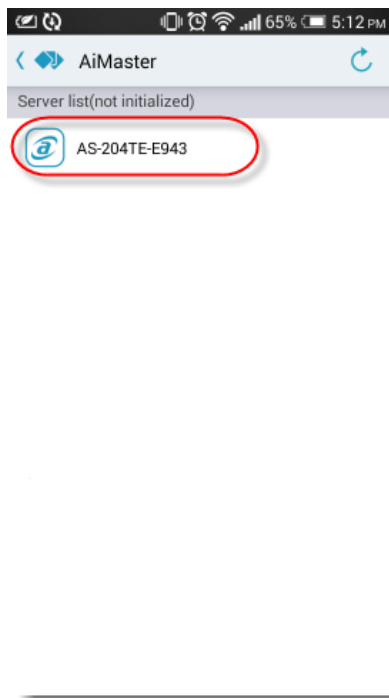
2. Make sure that your mobile device is connected to the same local network that your NAS is connected to.
3. Next, open AiMaster and then select the [+] icon from the toolbar at the top of the screen.



4. Select **[Auto Discovery]**. AiMaster will now scan the local network for your NAS.



5. Select your NAS from the list that appears.



6. Select **[Start Initialization]** to begin installation. Follow the prompts and instructions to complete the configuration process.



Installation Using the LCD Display

- The LCD display will ask you whether or not you want initialize the NAS once it has detected that the NAS has not yet started to initialize.



- Please use the "↵" button found on the right side of the LCD display to confirm that you want to initialize the NAS. The system will now start the initialization process.



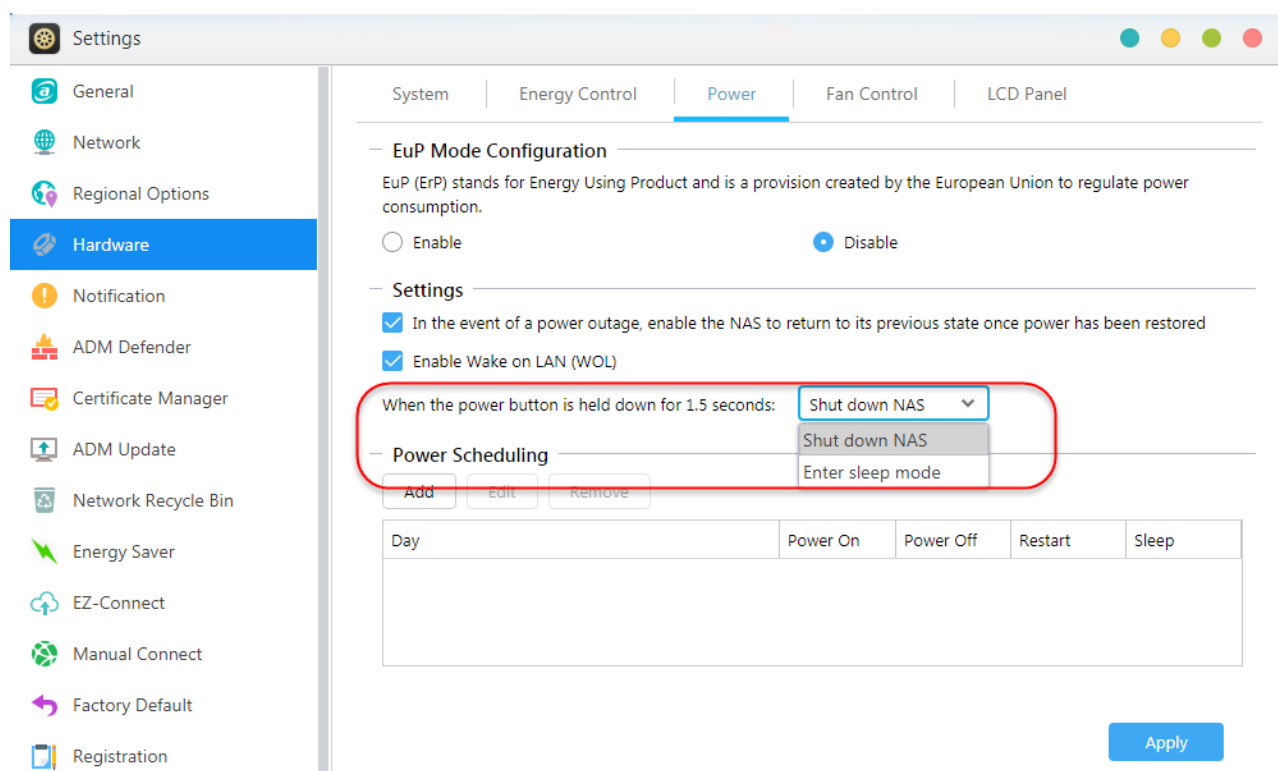
- Initialization is complete when the NAS's IP address is shown on the LCD display. NOTE: The password for the "admin" account will be set to "admin".
- This installation method is only suitable for use on models with LCD Displays AS6404T.

Installation Using a Direct Connection

Please see section [troubleshooting](#) for installation instructions.

Shutting Down Your NAS

1. Confirm the function settings for the power button as shown in the graphic below. When the power button is held down for 1.5 seconds you can decide whether to shut down the NAS or have it enter into sleep mode. This setting may be access from within ADM by selecting: [Settings]→[Hardware] → [Power] → [Settings].

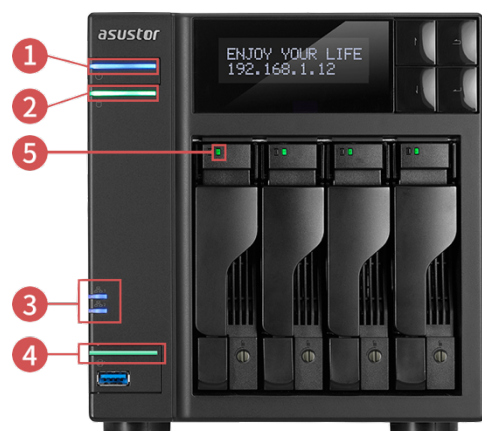


2. Hold down the power button for 1.5 seconds. You should be able to hear a "beep" from the system buzzer. Let go of the power button and the NAS will either shut down or enter sleep mode depending on your configuration.








5. Appendix

LED Indicators



AS6302T/AS6404T

1. Power LED Indicator
2. System Status LED Indicator
3. Network LED Indicator *
4. USB LED Indicator
5. Hard Disk LED Indicator

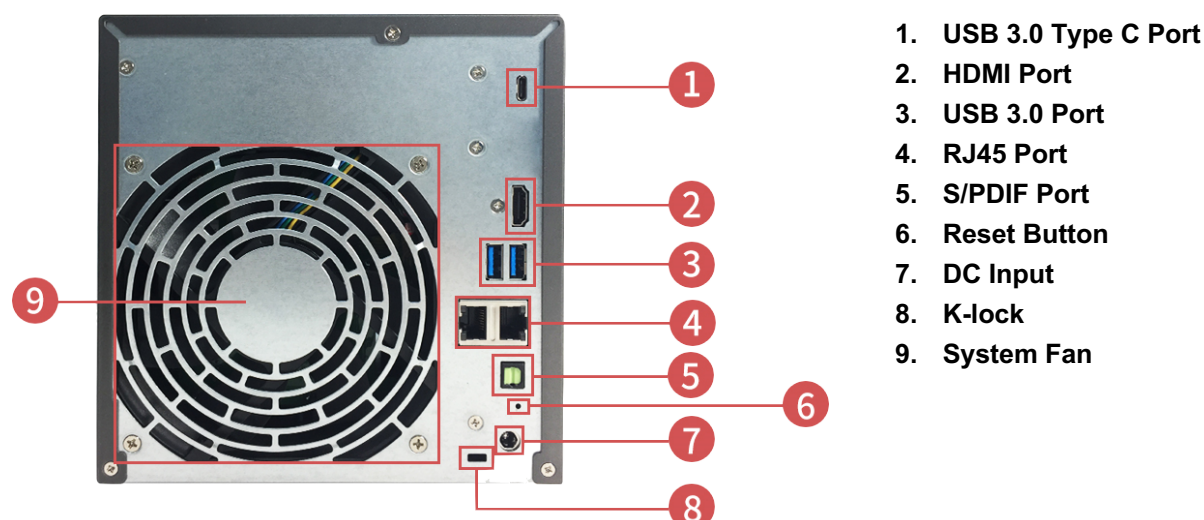
LED Indicator	Color	Description	State
Power 	Blue	Steadily lit	Power on
		Flashing	Waking from sleep mode (S3)
	Orange	Steadily lit	Sleep mode (S3)
		Flashes every 10 seconds	LED night mode
System Status 	Green	Flashing	Powering on
		Steadily lit	System ready
Network 	Blue	Steadily lit	Network port connected
USB 	Green	Steadily lit	The USB device connected to the front of the NAS is ready for use
		Flashing	Data access in progress
Hard Disk 	Green	Steadily lit	Hard disk ready
		Flashing	Data access in progress
		Flashes every 10 seconds	Hibernation mode

Red

Steadily lit

Hard disk abnormality

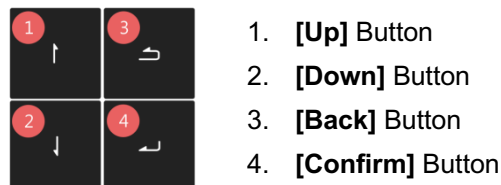
Rear Panel



1. USB 3.0 Type C Port
2. HDMI Port
3. USB 3.0 Port
4. RJ45 Port
5. S/PDIF Port
6. Reset Button
7. DC Input
8. K-lock
9. System Fan

Operating the LCD Panel

You can use the LCD panel to configure system settings and check system information. The buttons located on the right side of the LCD panel can be used to navigate through its menus. Please see the graphic below for a description of each button.



1. **[Up]** Button
2. **[Down]** Button
3. **[Back]** Button
4. **[Confirm]** Button

After powering on the NAS, you will be able to see the NAS name and IP address on the LCD panel. The panel will turn off automatically after a few seconds. You can use the panel to configure settings and check system information.

AS6404T-117E
172.16.2.35

The main menu consists of the following submenus:

1. 1 Touch Backup

- 2. Network
- 3. Storage
- 4. Temperature
- 5. Operation
- 6. Configuration

Press the [Up] or [Down] buttons to navigate through the menu items. Press the [Confirm] button to enter into any submenu. Press the [Back] button to return to the previous level.

1. Touch Backup

In the 1 Touch Backup submenu, you can use the [Up], [Down] and [Confirm] buttons to select and execute the actions below.

```
MAIN
>1 TOUCH BACKUP
```

- 1.1. Progress: Execute the backup function for the USB port located on the front panel.
- 1.2. Eject Device: Eject any USB devices connected to the USB port located on the front panel.

2. Network

In the Network submenu you can use the [Up], [Down] and [Confirm] buttons to view the information listed below.

```
MAIN
>NETWORK
```

- 2.1. LAN
 - 2.1.1 IP Address
 - 2.1.2 Subnet Mask
- 2.2 WAN
 - 2.2.1 IP Address
 - 2.2.2 Subnet Mask

3. Storage

In the Storage submenu you can use the [Up], [Down] and [Confirm] buttons to view the volume information listed below.

```
MAIN
>STORAGE
```

- 3.1. Total Space: The total storage capacity of the volume.
- 3.2. Used Space: The amount of space currently in use on the volume.
- 3.3. Free Space: The amount of free space remaining on the volume.

4. Temperature

In the Temperature submenu you can use the [Up], [Down] and [Confirm] buttons to view the temperature for the items listed below.

```
MAIN
>TEMPERATURE
```

- 4.1. CPU: The temperature of the CPU.
- 4.2. System: The temperature of the NAS system.
- 4.3. HDD: The temperature of the hard disks.

5. Operation

In the operation submenu you can use the [Up], [Down] and [Confirm] buttons to execute the actions listed below.

```
MAIN
>OPERATION
```

- 5.1. Shutdown: Shutdown the NAS.
- 5.2. Restart: Restart the NAS.

6. Configuration

In the Configuration submenu you can use the [Up], [Down] and [Confirm] buttons to configure the items listed below.

```
MAIN
>CONFIGURATION
```

6.1. Server Name

Press the [Up] or [Down] buttons to cycle through letters and numbers. Press the [Confirm] button to confirm the character of your choice and to move on to the next character. Repeat this process until all of the characters in the name are configured. Pressing the [Back] button will bring up the “Confirm Change” option. You will be able to select between “Yes” and “No”.

```
SERVER NAME
ASUSTOR NAS
```

6.2. Network Setting

6.2.1. LAN

6.2.1.1. DHCP

Pressing the [Confirm] button will bring up the “Confirm Change” option. You will be able to select between “Yes” and “No”.

6.2.1.2. Static address

6.2.1.2.1. IP Address

Press the [Up] or [Down] buttons to cycle through numbers. Press the [Confirm] button to confirm the number of your choice and to move on to the next number. Repeat this process until all of the numbers are configured. Pressing the [Back] button will bring up the “Confirm Change” option. You will be able to select between “Yes” and “No”.

6.2.1.2.2. Subnet Mask

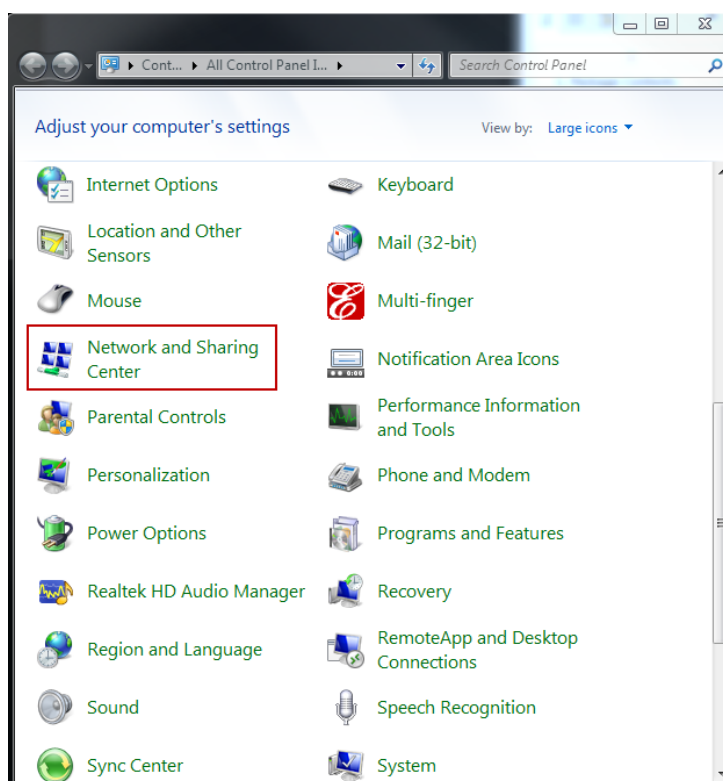
Press the [Up] or [Down] buttons to cycle through numbers. Press the [Confirm] button to confirm the number of your choice and to move on to the next number. Repeat this process until all of the numbers are configured. Pressing the [Back] button will bring up the “Confirm Change” option. You will be able to select between “Yes” and “No”.

Troubleshooting

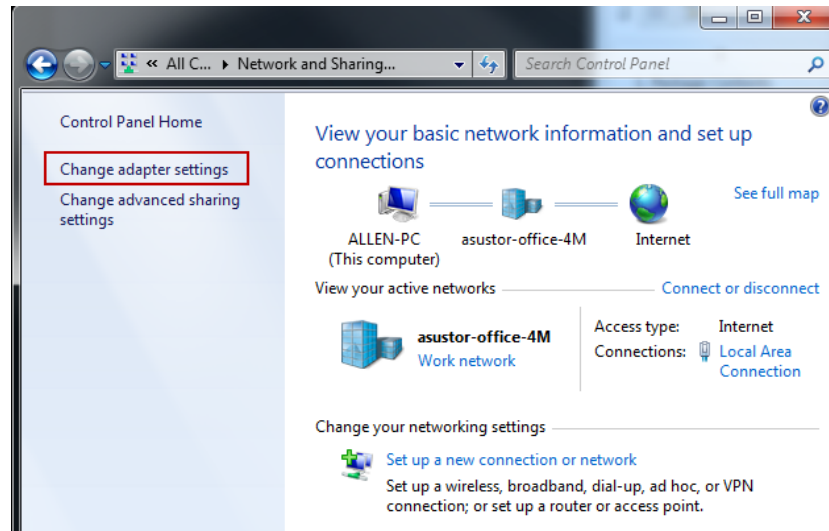
Q: Why can't I detect my ASUSTOR NAS using ASUSTOR Control Center?

A: If you are having trouble detecting your NAS using ASUSTOR Control Center, please do the following:

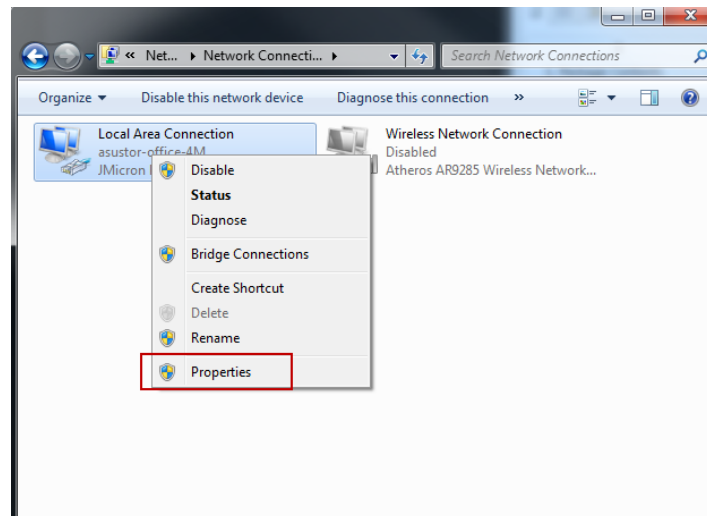
1. Please check your network connection:
 - ✓ Make sure that your computer and your NAS are part of the same local area network.
 - ✓ Check to see if the network LED indicator is lit. If you find that it is not lit, try connecting your Ethernet cable to the other network port or try using a different Ethernet cable.
 2. Please first disable any firewalls that may be running on your computer. Then try scanning for your NAS again using ASUSTOR Control Center.
 3. If you still cannot detect your NAS, please connect your NAS to your computer using the provided RJ-45 network cable and change your computer's IP settings.
- ✓ Select **[Start] → [Control Panel] → [Network and Sharing Center]**



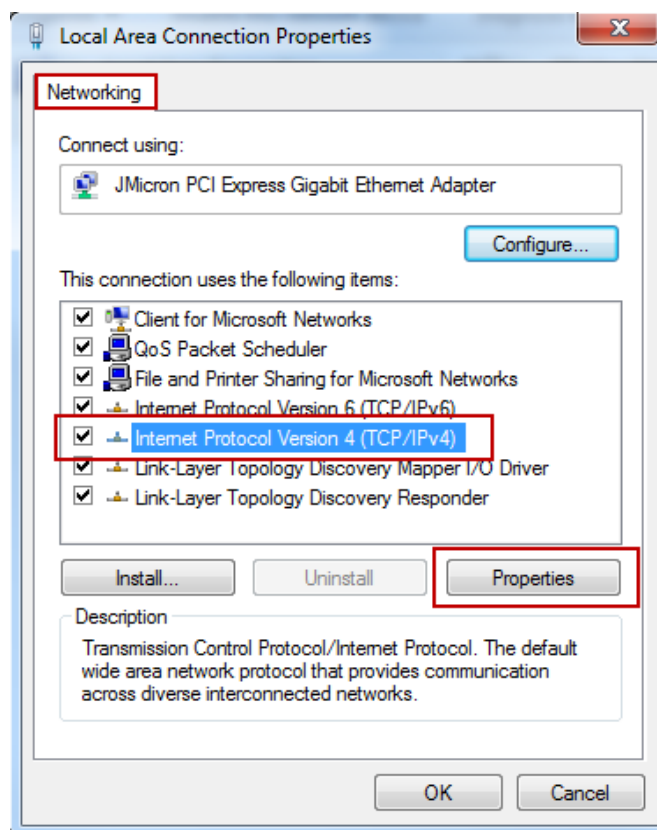
- ✓ Click on **[Change adapter settings]** in the left hand panel.



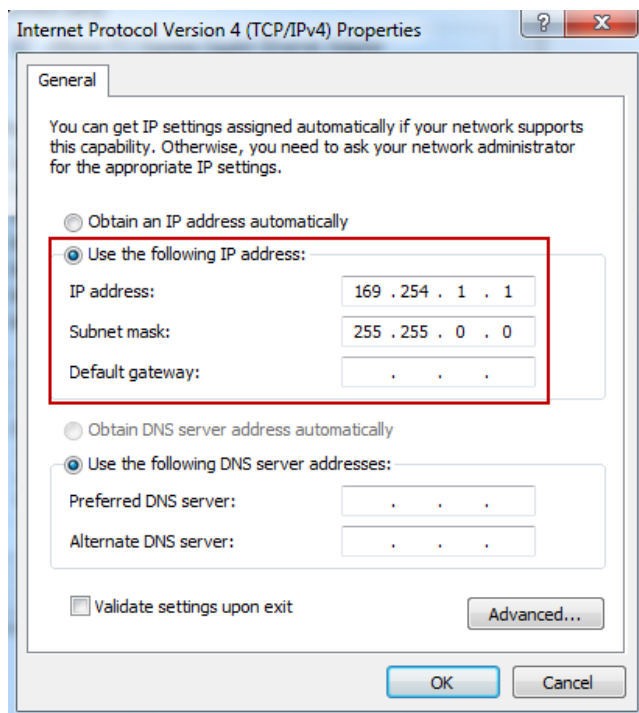
- ✓ Right-click on **[Local Area Connection]** and select **[Properties]**.



- ✓ Under the **[Networking]** tab select **[Internet Protocol Version 4 (TCP/IPv4)]** and click on **[Properties]**.



- ✓ Under the **[General]** tab select the **[Use the following IP address]** radio button. Set the **[IP address]** to **169.254.1.1** and the **[Subnet mask]** to **255.255.0.0** and then click on **[OK]**.



- ✓ Open up ASUSTOR Control Center to scan for your NAS.

Control Center								
asustor								
English								
<div> <div>Scan</div> <div>Open</div> <div>Connect</div> <div>ADM Update</div> <div>Service</div> <div>Action</div> </div>								
Name	IP	Model	Serial Number	MAC Address	ADM Version	Status	WOL	
AS7010T-0001	172.16.1.44	AS7010T	AS13037010TM0002	20:14:07:01:00:01	2.4.0.RFU6	Ready	Enable	
AAAAAA	172.16.2.157	AS7004T	AS14107004TM0431	10:bf:48:8a:89:f8	2.4.1.BI81	Ready	Enable	
AS7004T-mktdemo	172.16.2.120	AS7004T		20:14:09:12:00:03	2.4.0.BHQ1	Ready	Enable	
AS7004T-K	172.16.2.240	AS7004T		20:14:09:11:00:03	2.4.0.RFU6	Ready	Enable	
AS7008T-0001	172.16.2.79	AS7008T		20:14:07:04:00:01	2.5.0.A5T1	Ready	Enable	
AS7004T-0009	172.16.12.0	AS7004T		20:14:09:12:00:09	2.4.0.RFU6	Ready	Enable	
AS7008T-0009	172.16.1.88	AS7008T	AS15047009TM0000	20:14:07:01:00:09	2.4.1.BI91	Ready	Enable	
AS7010T-000D	172.16.1.172	AS7010T	AA14087008ZZ8888	20:14:07:02:00:0d	2.5.0.A681	Ready	Enable	
AS7004T-0007	172.16.8.47	AS7004T	ES00000000000009	20:14:09:12:00:07	2.4.1.BI81	Ready	Enable	
AS7004T-0007	172.16.8.30	AS7004T	AS1234567TM1000	20:14:09:11:00:07	2.4.1.BI81	Ready	Enable	
AS7010T-NVR	172.16.12.144	AS7010T	AS14087010TM0221	10:bf:48:8a:6f:70	2.4.0.RFU6	Ready	Enable	
briAS7012R-7608	172.16.2.5	AS7012R	AS14097012RM0053	10:bf:48:8a:76:08	2.4.1.BIA1	Ready	Enable	
7008-TV	172.16.2.142	AS7008T	AS14087010TM0044	10:bf:48:8a:6e:e5	2.4.1.BI81	Ready	Enable	

- If the above mentioned procedures have not managed to solve your problem, please contact your local ASUSTOR dealer or ASUSTOR Customer Service <http://support.asustor.com>. You are also encouraged to browse through the [ASUSTOR Knowledgebase](#).



SUPPORT.ASUSTOR.COM